

A life you were eagerly waiting for, begins from
destiny. The luxurious apartments that will give a
space filled with bliss and calm, which you will
love to call your home.





Sit back and relax in an extravagant space. Enjoy the comfort and family time here, that you crave for after a hard day at work.





BIRD EYE VIEW



A fit mind always compliments a fit body. A dedicated tranquil Yoga room and Gym that will get you indulged in calm and bring you inner peace.





GARDEN

SAFETY
BEGINS
NOW



Let a feeling of security sweep over you like a gust of spring breeze, as soon as you cross the threshold of Pramukh Destiny.



ENTRY GATE





Giggles, laughter and memories will start to flow in your family calendar. Let the indoor games rejuvenate your mind and help you soak fun in life.

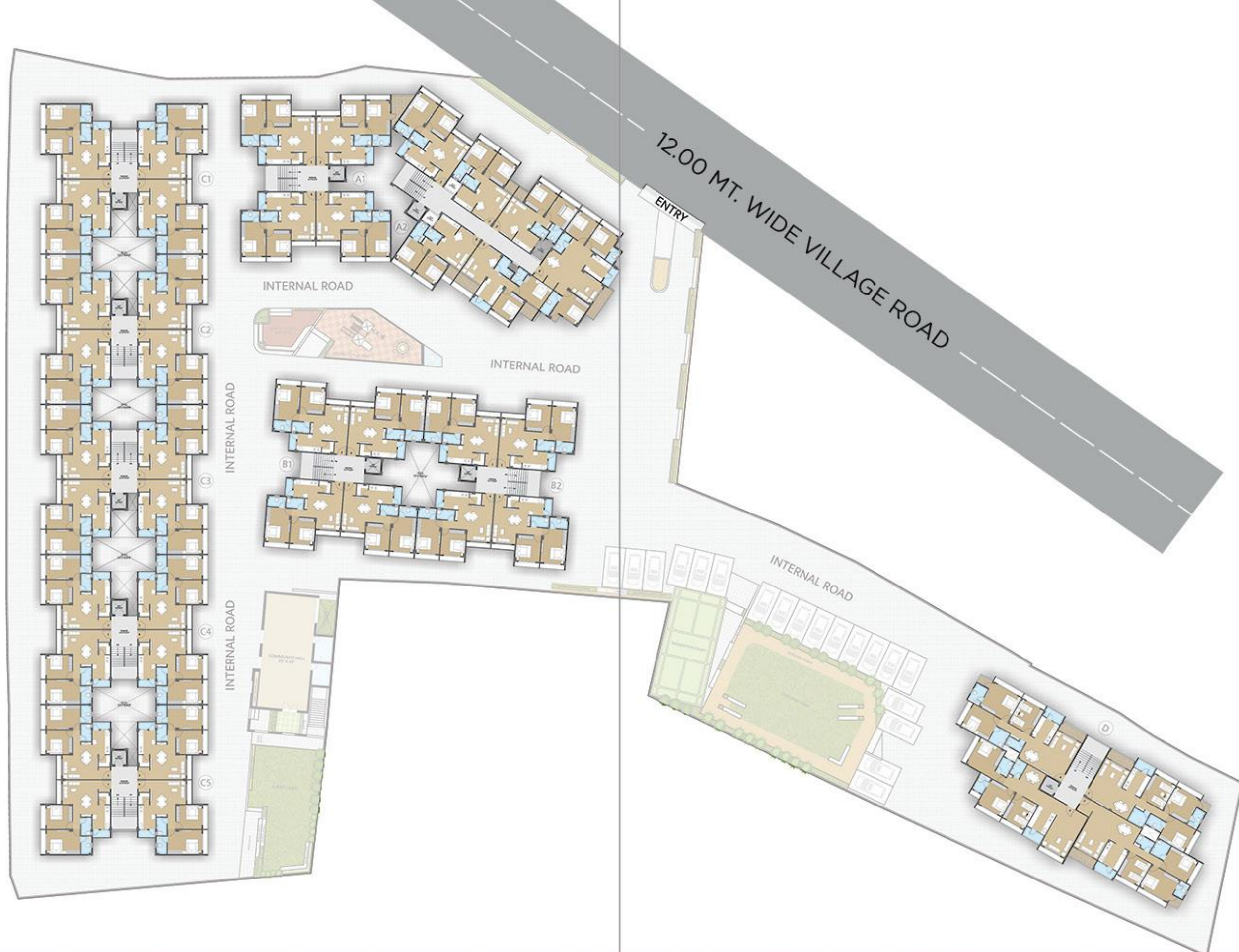


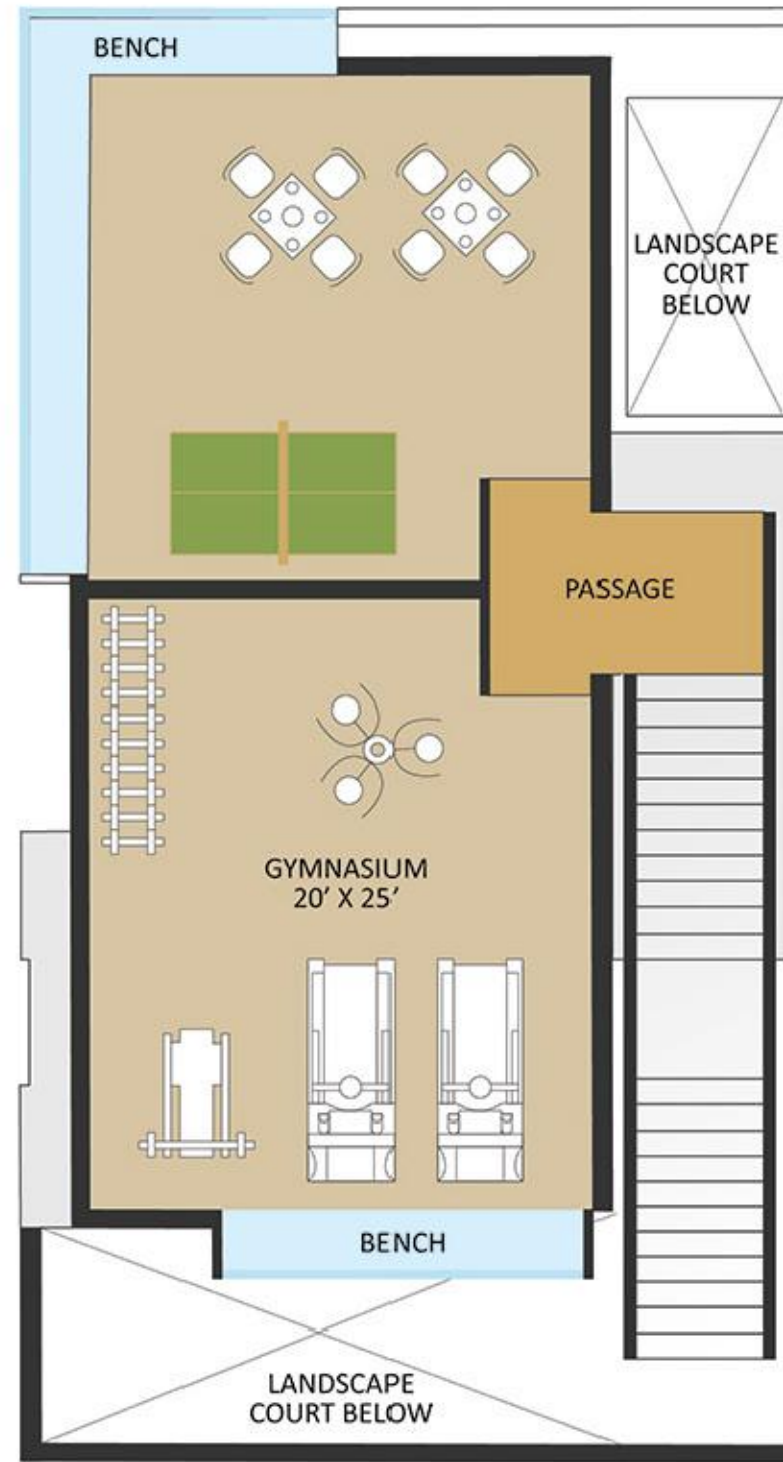




LEGEND

- 01. ENTRANCE GATE
- 02. SENIOR CITIZEN SEAT OUT
- 03. CHILDREN'S PLAY AREA
- 04. COMMUNITY HALL
- 05. EVENT LAWN
- 06. BADMINTON COURT
- 07. JOGGING TRACK
- 08. LANDSCAPE LAWN
- 09. 2-WHEELER PARKING
- 10. 4-WHEELER PARKING
- 11. FOYER
- 12. PATHWAY FOR CAR
- 13. SECURITY CABIN
- 14. FUTURE EXPANSION



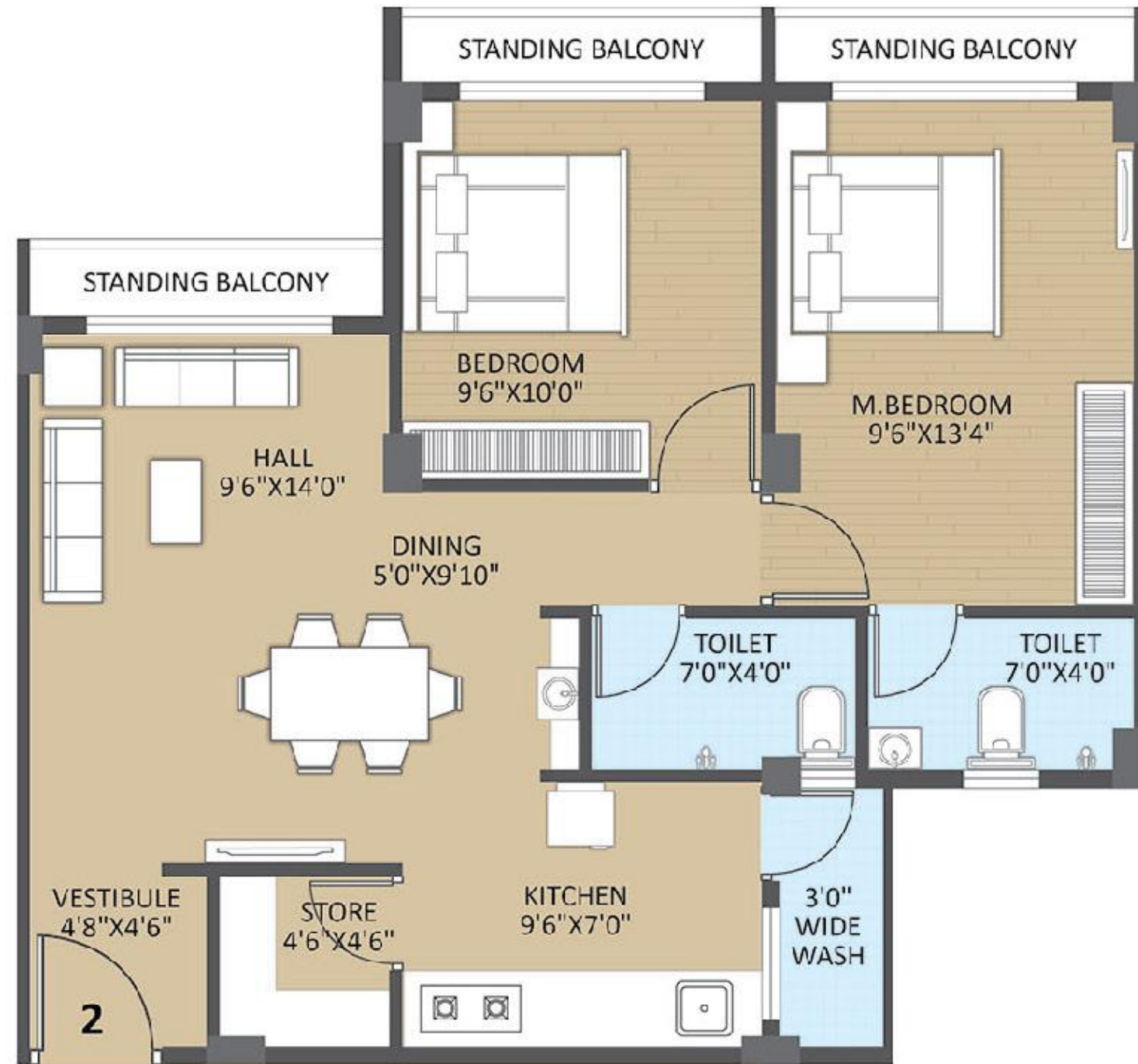


CLUB



CLUB

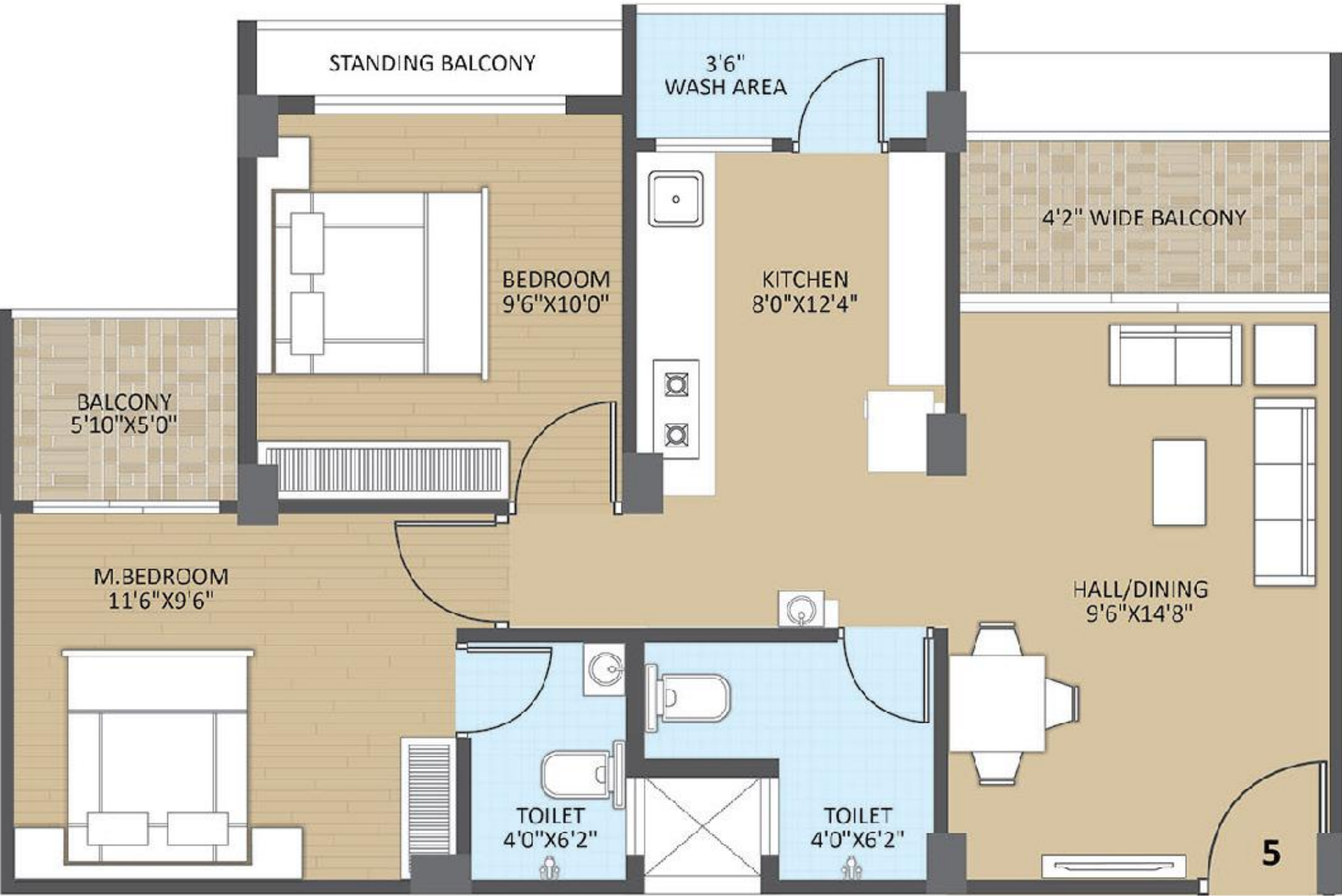




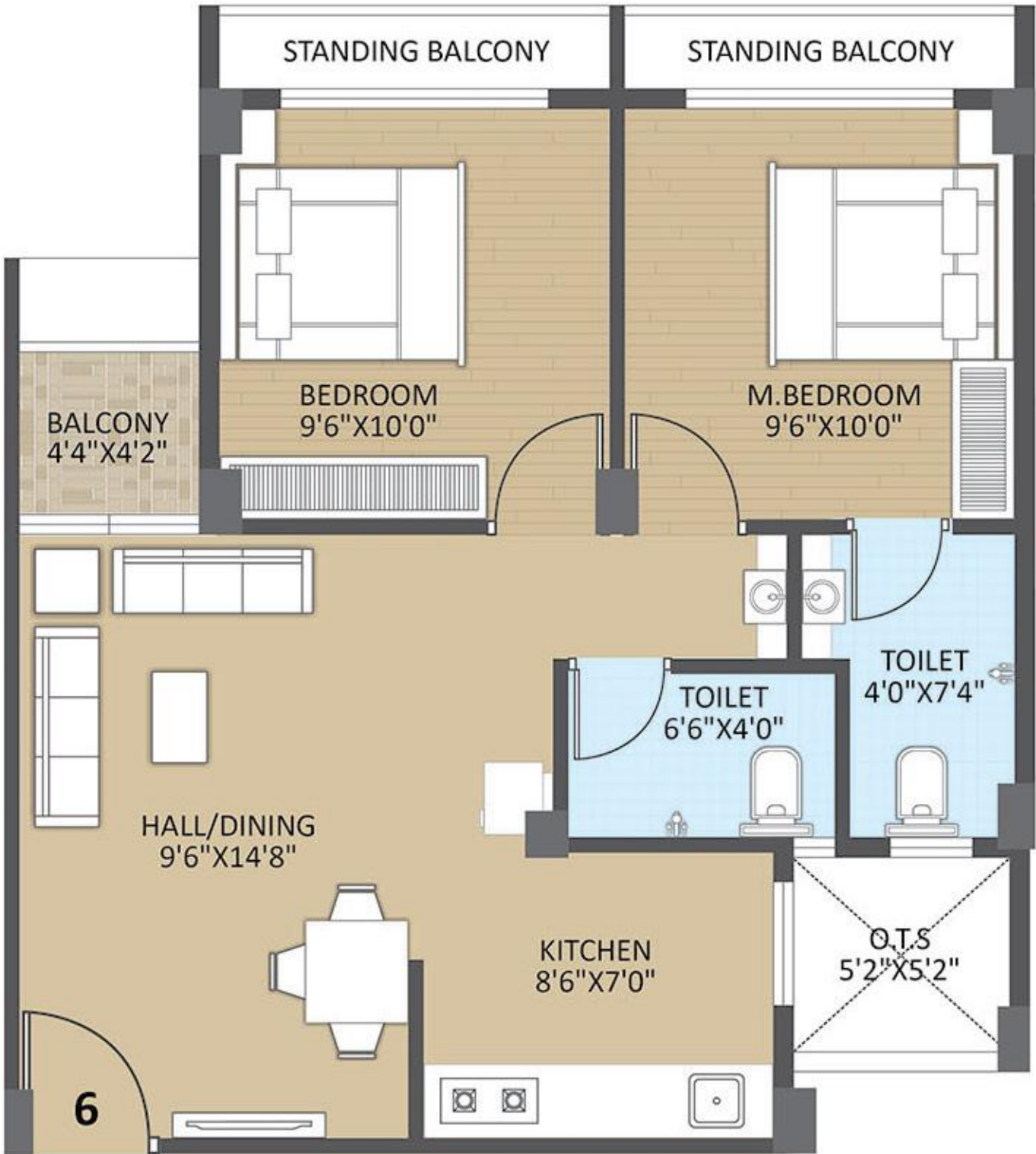
BLOCK - A1



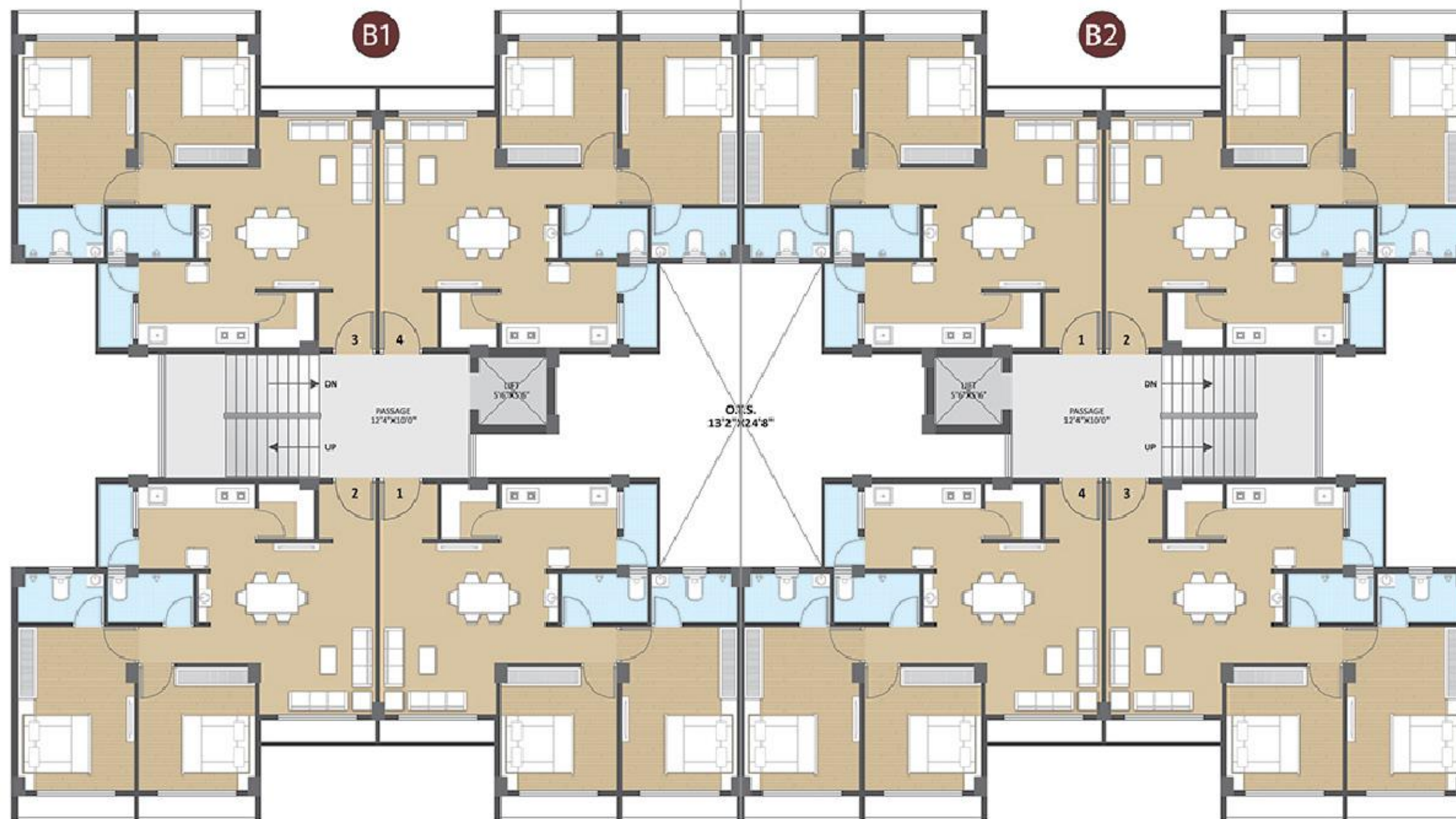
BLOCK - A2

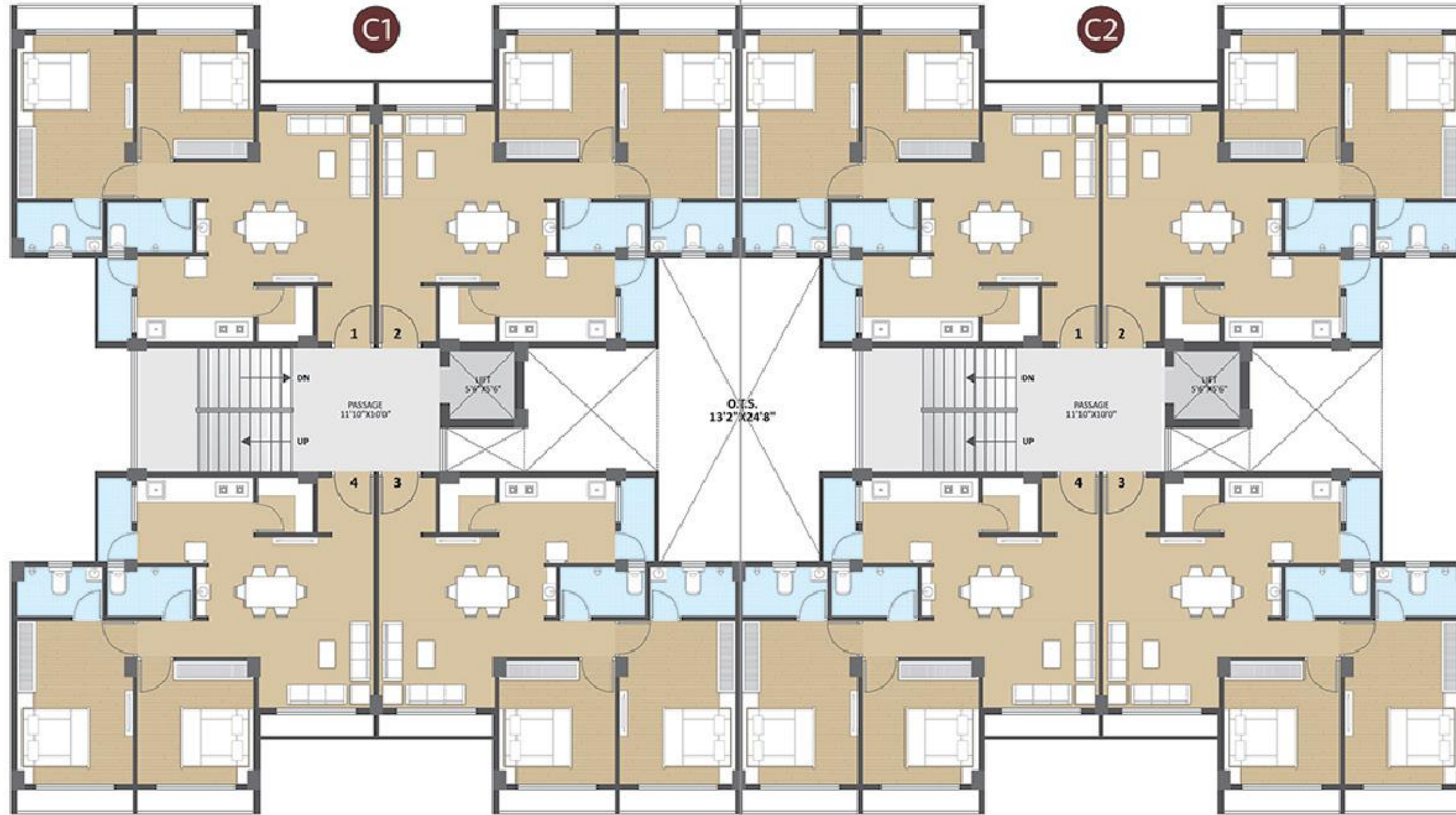
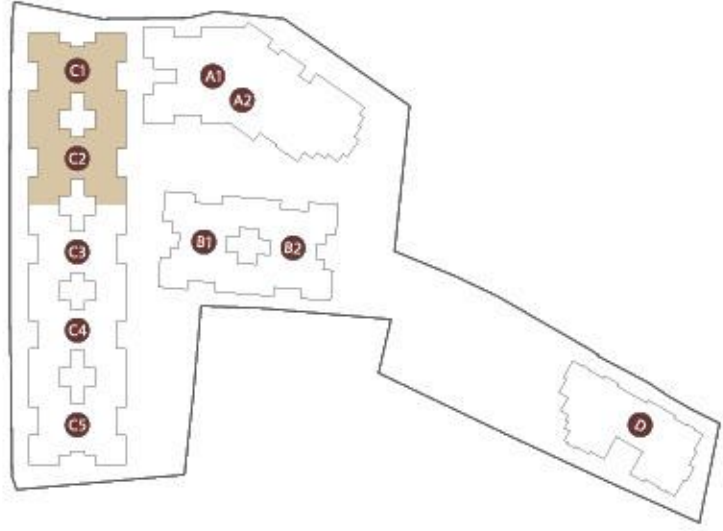


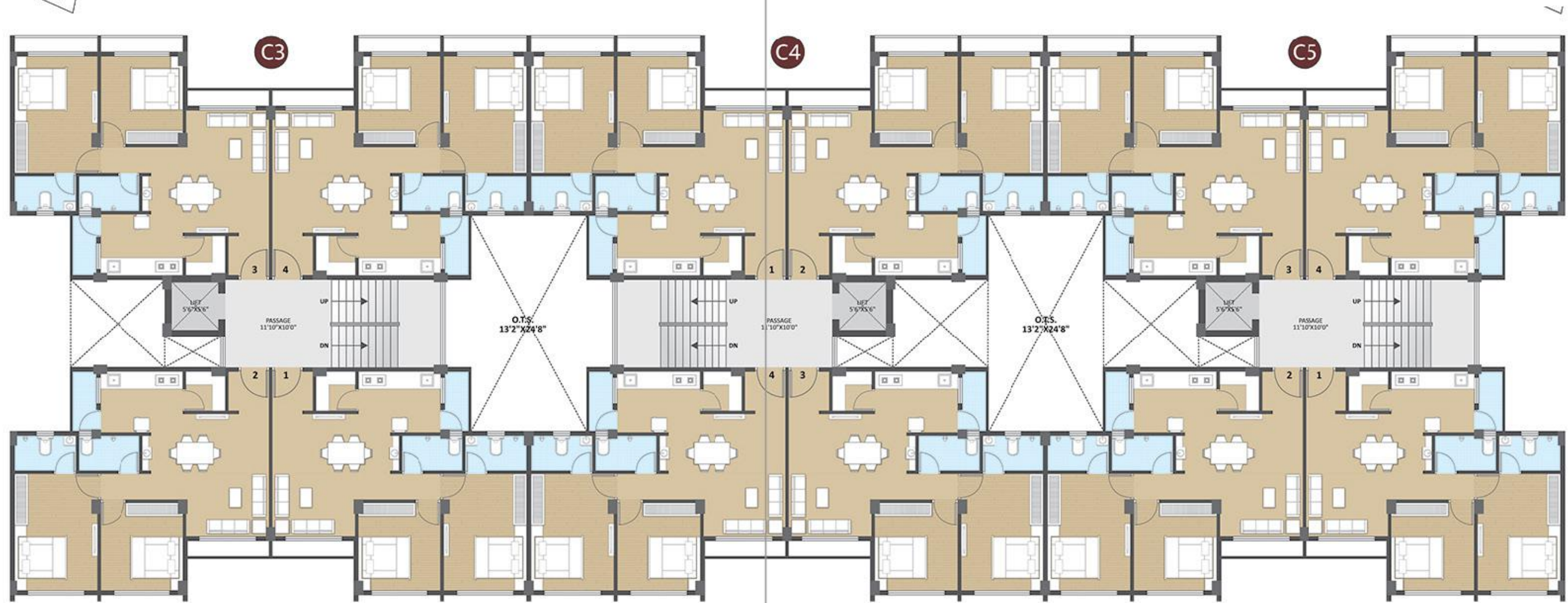
BLOCK - A2

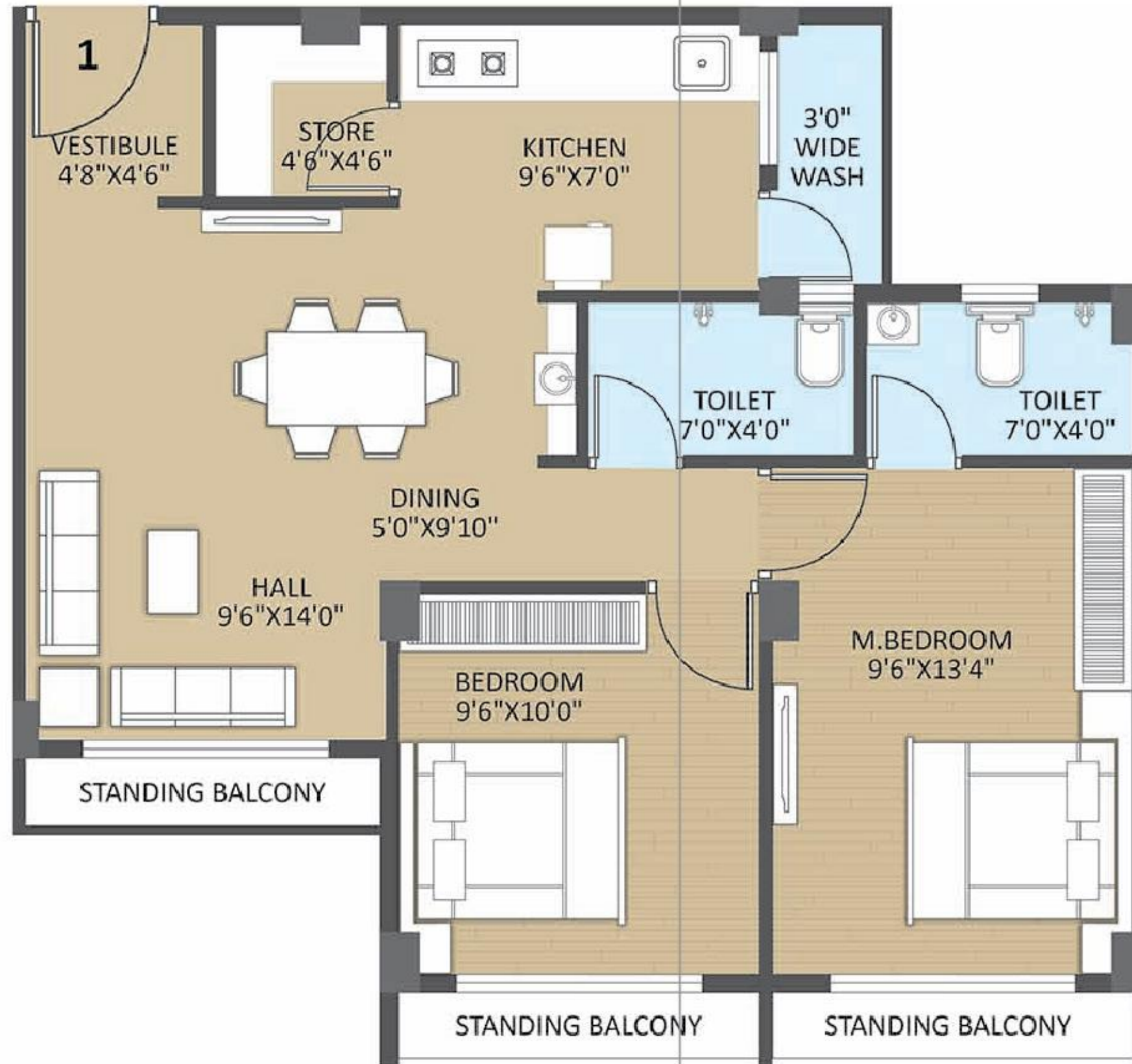


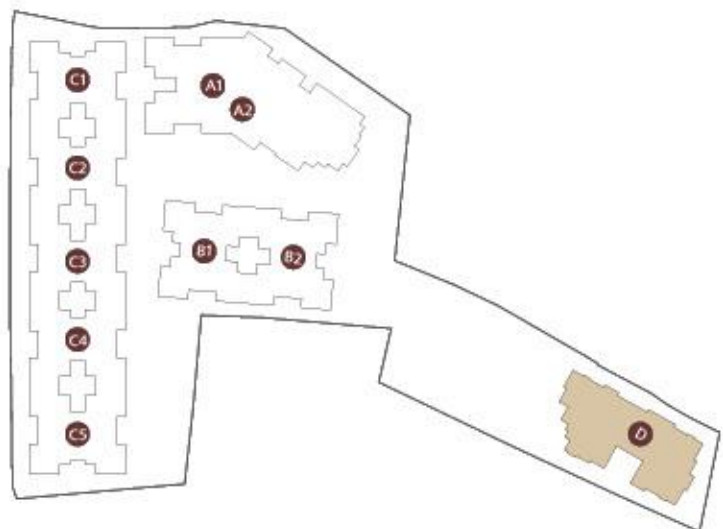
BLOCK - A2











LUXURIOUS AMENITIES & SPECIAL FEATURES

	CCTV Surveillance
	Entrance Gate With Adequate Security
	Landscaped Garden With Jogging Track
	Outdoor Sport Facility
	Proper Internal Roads With Adequate Pole Lights
	Community Hall With Lawn
	Gymnasium
	Indoor Games
	Children's Play Area
	Senior Citizen Sit Out
	Decorative Entrance
	Power Back-up For Common Amenities
	Standard Quality Lifts

SPECIFICATIONS

- **FLOORINGS** - 24”x24” Vitrified Tiles In All Areas.
- **WALLS** - Internal Walls And Ceilings-mala Plaster With Wall Gypsum, External Walls-double Coat Sand-face Plaster With Apex Paint.
- **KITCHEN** - Kitchen Platform With Granite Top And Stainless-steel Sink. Designer Ceramic Tiles Dado On Kitchen Counter Up To Lintel Level
- **BALCONY** - Safety Grill For All The Flats Is Compulsory. Safety Grill Expense By Flat Purchaser
- **DOOR & WINDOWS** - Main Entrance Door - Solid Core Flush Door With Both Side Molded Designer Door Skin. Other Flush Doors With Both Sides Laminate. Anodized Aluminium Sliding Windows With Quality Bearings And Fittings And Stone Sills And Jambs. All Door Frame Covered By Granite & Marble Sill.
- **TOILET** - Designer Tiles On Floor And Walls Upto Lintel Level. Branded C.P. Faicets. Branded Range Of Ceramic Vessels.
- **PLUMBING** - C.P.V.C Water Supply Pipes And Tough/durable Finolex Pvc Drainage Pipes For Soil, Waste And Drainage Systems.
- **WATER SUPPLY** - Centralized Water Supply System.
- **ELECTRICAL WORK** - Branded Modular Switches. Concealed Copper Wiring With Adequate Number Of Points In All Rooms. Bedroom Will Have Ac Point & Cable Point In Hall. Mcb Distribution Panel For Extra Safety. Automatic Elevators For Escalating Comforts.
- **ROOF** - Brick - Bat Concrete For Heat Reflection And Thermal Insulation.

DISCLAIMER:
Any amendments in rules & regulations by any authority will be bound to all members. All expenses of legal document, GEB, extra stamp duty, GST (if applicable), society maintenance will be borne by member. External changes shall not be allowed. Internal changes will be permitted with permission and extra cost. Members are bound to pay installments regularly and irregularity in payment may cause cancellation of booking. Developer reserves the right of any changes in the scheme & it shall be bound to all member. Developers holds the terrace rights. This brochure is only for private circulation for general information to the member & shall not form a part of any agreement. The views shown in the brochure are artist's impression only and not a legal offering and not will be part of the agreement. Safety grill is compulsory and the design would be given by developer only, the cost of the same is charged extra.



SOUTH GUJARAT'S LEADING REAL ESTATE DEVELOPER

Derived from the word 'Prime', Pramukh was established in the year **1993**, and is on the path of delivering iconic and class apart projects since then. Pramukh group has been providing aesthetically appealing and comfortable properties in Surat, Vapi, Silvassa and Umbergaon.

Over the last **25 years**, we have enjoyed the patronage of over **12,000+** families, with more than **12 million Sq. Ft.** constructed floor space. Currently, **6700+** homes i.e. **8 million Sq. Ft** area is under development.

Pramukh has been a key contributor in developing the real estate infrastructure in Vapi, specifically in Gunjan and Chala region. After the successful delivery of 350+ units of Pramukh Hills in 2007-2008, it is now coming up with a new project, Pramukh Destiny. In the meantime, the group has immensely contributed to the advancement of the area, New Chala.

Welcome to Pramukh Destiny, Vapi
Welcome To 'A Class Of Its Own'

www.pramukh.co.in | inquiry@pramukh.co.in
[f /pramukhgroup](https://www.facebook.com/pramukhgroup)



Site Address

Pramukh Destiny
Survey No 232,
Chiri Chharwada Road,
Chharwada. Vapi-396191

Booking Contact

79007 80078
81417 60000

Developer

Destiny Enterprise

Structural Consultants

Shilpam, Vapi

