

WHERE
BUSINESSES
BECOME
BRANDS



ORBIT 3

WORKSPACES

SHOWROOMS • OFFICES • CAFES • RESTAURANTS

@ Vesu-Canal Road, Vesu, Surat

A Project By



PRAMUKH®

A CLASS OF ITS OWN



There's a dream, a dream
to get established in the market,

A dream to build a brand
that creates value for the world,

A dream to reach the
heights of success

ORBIT 3

is where you can
make your dream come true!



What does a good
business look like?

Abundant footfall,
a high-value product,
incredible service demand
and unstoppable growth

ORBIT 3

gives your business the
exact push it needs.

If you want to experience
a posh and premium lifestyle
then Vesu is the place for you.
It is one of the best localities
in Surat that has all the
big brands, malls, and stadiums,
also it is near the surat airport.



VESU

Continuing the proud legacy
of Orbit with Orbit 3.

Our Orbit line has Orbit Plaza,
Orbit 1, Orbit 2 & Orbit 3
all as commercial projects.

**Orbit 3 Consists Of Ground +
12 Floors With 131 Units In Total**

**It Has 9 Showrooms
On The Ground Floor &
122 Offices On 1st To 12th Floor**

ORBIT 3

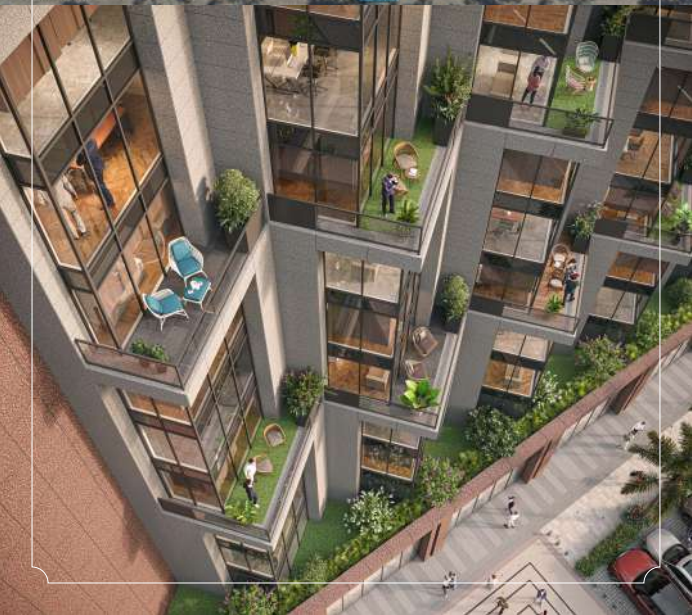
WORKSPACES

SHOWROOMS • OFFICES • CAFES • RESTAURANTS











1

1st Basement Plan



2

2nd Basement Plan



3rd Basement Plan



G1	C.A.-653 SQFT
G2	C.A.-900 SQFT
G3	C.A.-687 SQFT
G4	C.A.-934 SQFT
G5	C.A.-1181 SQFT
G6	C.A.-1428 SQFT
G7	C.A.-1066 SQFT
G8	C.A.-1359 SQFT
G9	C.A.-617 SQFT

101	C.A.-1151 SQFT
102	C.A.-490 SQFT
103	C.A.-737 SQFT
104	C.A.-984 SQFT
105	C.A.-1231 SQFT
106	C.A.-1207 SQFT
107	C.A.-450 SQFT
108	C.A.-450 SQFT
109	C.A.-450 SQFT
110	C.A.-450 SQFT
111	C.A.-450 SQFT



1st Floor Plan

201,301	C.A.-1151 SQFT
202,302	C.A.-490 SQFT
203,303	C.A.-737 SQFT
204,304	C.A.-984 SQFT
205,305	C.A.-1231 SQFT
206,306	C.A.-1207 SQFT
207,307	C.A.-450 SQFT
208,308	C.A.-450 SQFT
209,309	C.A.-450 SQFT
210,310	C.A.-450 SQFT
211,311	C.A.-450 SQFT



2nd & 3rd Floor Plan

401	C.A.-916 SQFT
402	C.A.-413 SQFT
403	C.A.-659 SQFT
404	C.A.-906 SQFT
405	C.A.-1155 SQFT
406	C.A.-1018 SQFT
407	C.A.-450 SQFT
408	C.A.-450 SQFT
409	C.A.-450 SQFT
410	C.A.-450 SQFT
411	C.A.-450 SQFT



4th Floor Plan

501	C.A.-916 SQFT
502	C.A.-413 SQFT
503	C.A.-659 SQFT
504	C.A.-906 SQFT
505	C.A.-1155 SQFT
506	C.A.-1018 SQFT
507	C.A.-450 SQFT
508	C.A.-450 SQFT
509	C.A.-450 SQFT
510	C.A.-450 SQFT
511	C.A.-450 SQFT



5th Floor Plan

601	C.A.-1074 SQFT
602	C.A.-413 SQFT
603	C.A.-659 SQFT
604	C.A.-906 SQFT
605	C.A.-1155 SQFT
606	C.A.-1207 SQFT
607	C.A.-450 SQFT
608	C.A.-450 SQFT
609	C.A.-450 SQFT
610	C.A.-450 SQFT
611	C.A.-450 SQFT



6th Floor Plan

701	C.A.-997 SQFT
702	C.A.-336 SQFT
703	C.A.-583 SQFT
704	C.A.-830 SQFT
705	C.A.-1077 SQFT
706	C.A.-1207 SQFT
707	C.A.-450 SQFT
708	C.A.-450 SQFT
709	C.A.-450 SQFT
710	C.A.-450 SQFT
711	C.A.-450 SQFT



7th Floor Plan

801	C.A.-997 SQFT
802	C.A.-336 SQFT
803	C.A.-583 SQFT
804	C.A.-830 SQFT
805	C.A.-1077 SQFT
806	C.A.-1207 SQFT
807	C.A.-450 SQFT
808	C.A.-450 SQFT
809	C.A.-450 SQFT
810	C.A.-450 SQFT
811	C.A.-450 SQFT



8th Floor Plan

901	C.A.-997 SQFT
902	C.A.-336 SQFT
903	C.A.-583 SQFT
904	C.A.-830 SQFT
905	C.A.-1077 SQFT
906	C.A.-1207 SQFT
907	C.A.-450 SQFT
908	C.A.-450 SQFT
909	C.A.-450 SQFT
910	C.A.-450 SQFT
911	C.A.-450 SQFT



9th Floor Plan

1001	C.A.-890 SQFT
1002	C.A.-767 SQFT
1003	C.A.-753 SQFT
1004	C.A.-1000 SQFT
1005	C.A.-1207 SQFT
1006	C.A.-450 SQFT
1007	C.A.-450 SQFT
1008	C.A.-450 SQFT
1009	C.A.-450 SQFT
1010	C.A.-450 SQFT



10

10th Floor Plan



1101	C.A.-890 SQFT
1102	C.A.-257 SQFT
1103	C.A.-509 SQFT
1104	C.A.-753 SQFT
1105	C.A.-1000 SQFT
1106	C.A.-1207 SQFT
1107	C.A.-450 SQFT
1108	C.A.-450 SQFT
1109	C.A.-450 SQFT
1110	C.A.-450 SQFT
1111	C.A.-450 SQFT



11

11th Floor Plan





1201	C.A.-731 SQFT
1202	C.A.-2540 SQFT
1203	C.A.-3919 SQFT



12

12th Floor Plan



PERSONAL TERRACE	C.A.-2349 SQFT
PERSONAL TERRACE	C.A.-4318 SQFT



T

Terrace Floor Plan



BHARTHANA

G.D.GOENKA
INTERNATIONAL
SCHOOL

C.B. PATEL
CRICKET
STADIUM

VEER NARMAD
SOUTH GUJARAT
UNIVERSITY

HOTEL
ROYAL
RITUALS

ORBIT 2
By Pramukh

HILL'S
HIGH
SCHOOL

L. P. SAVANI
ACADEMY

SHREE SHYAM
BABA MANDIR

BHAGWAN
MAHAVIR
UNIVERSITY

CB PATEL
HEALTH CLUB

ANANTA
By Pramukh

SDJ
INTERNATIONAL
COLLEGE

TOWNHOUSE
714 PARK
CELEBRATION

AGASTYA
By Pramukh

DRB SPORTS
COMPLEX

AGRAWAL
VIDYA VIHAR

HAPPY
HALLMARK
SHOPPERS

VIVANTA
By Pramukh

SANCHI
BOUTIQUE

HDFC
BANK
SBI BANK
AXIS BANK

SIDDHIVINAYAK
TEMPLE

S. D. JAIN
MODERN
SCHOOL

SUNSHINE
GLOBAL HOSPITAL

LALBHAI
CONTRACTOR
STADIUM

RR MALL

CENTRAL

PRIME
SHOPPERS

VESU

REBOUNCE!
FUN TOH
YAHAN HAI

TURF SPORTS

THE ROPEWAY
RESTAURANT

OLIV
CLUB

REVANTA
By Pramukh

VR MALL

VALENTINE
MULTIPLEX

ORBIT 3
WORKSPACES

L&T
COLONY

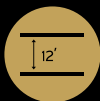
ONGC
COLONY

LE MERIDIAN

TAPI RIVER

SURAT
INTERNATIONAL
AIRPORT

PROJECT FEATURES AND AMENITIES



12' floor height for showrooms with virtually column free space



Triple height foyer



3 lifts



3 level basement parking with dedicated parking space



Exclusive terrace access to selected offices



Use of GRC (Glass fibre-reinforced concrete) sun breakers



Ample parking space for visitors



Open air cafeteria



HIGHLIGHTS OF UNIQUE FEATURE

- Exclusive terrace access to selected offices
- An iconic building with futuristic elevation
- Uniquely designed retail space with maximum road frontage
- Exquisite triple height foyer
- 2 level basement parking with dedicated parking space
- 12' floor height for showrooms with virtually column free space

SUSTAINABLE DESIGN

- Earthquake Res. Structure
- Water Harvesting
- Use of LED
- Use of Power Saving Equipment like Pump, Lift etc
- Use of Eco-friendly material like AAC Block
- Toxin Free Colors
- Hydro-pneumatic water system

FACILITIES MANAGEMENT FIRM INVOLVED

- | | |
|-----------------|------------------|
| • House-keeping | • Pest Control |
| • Electrician | • First Aid |
| • Plumber | • AMC Management |
| • 24x7 Security | |

ORBIT 3

WORKSPACES

SHOWROOMS • OFFICES • CAFES • RESTAURANTS

SITE ADDRESS

FP 72, TP 7, Beside Revanta By Pramukh,
Vesu-Canal Road, Vesu, Surat.



[Click Here For The Site Location](#)

CORPORATE ADDRESS

Pramukh Group, 1001-1002, Orbit 2, Vesu-Canal Road,
Beside Celestial Dreams, Vesu, Surat-395007

BOOKING CONTACT

+91 7574870757 / +91 9978986778
inquiry@mypramukh.com
www.pramukh.co.in

DEVELOPER

Orbit 3 Corporation

ARCHITECTS

Adda Architects, Surat

STRUCTURAL CONSULTANTS

Technocrat Consultants, Surat

PMC

Studio 13, Surat

MEP CONSULTANTS

Atomep Enteam Private Limited
Ahmedabad

RERA NO: PR/GJ/SURAT CITY/SUDA/CAA11721/050523
www.gujrera.gujarat.gov.in

SOUTH GUJARAT'S LEADING REAL ESTATE DEVELOPER



Derived from the word 'Prime', Pramukh was established in the year 1993, and is on the path of delivering iconic and class apart projects since then. Pramukh group has been providing aesthetically appealing and comfortable properties in Surat, Vapi, Silvassa and Umbergaon. Over the last 30 years, we have enjoyed the patronage of over 13,000+ families, with more than 17 million sq. Ft. constructed floor space.

Welcome To 'A Class Of Its Own'

17 MILLION+ Sq. Ft. Delivered

20 ONGOING PROJECTS IN 3 CITIES
Surat, Vapi & Silvassa

8.4 MILLION+ Sq. Ft. Under Development

13,000+ Homes Delivered

6700+ Homes In Progress

A Project By



PRAMUKH®

A CLASS OF ITS OWN

DISCLAIMER: Premium quality materials or equivalent branded products shall be used for all construction work • DGVCL charges, gas charges, legal charges and other Govt.charges shall be paid separately. • Maintenance deposit shall be paid separately. • Right of any changes in dimensions, design & specifications will be reserved with the developer, which shall be binding for all members. • External changes strictly not allowed. • Stamp duty, registration fees, and service tax charges on allotment and possession of the property shall be borne by the purchaser, applicable as per prevailing law. • Any additional liabilities due to change in the by-laws, stamp duty govt. laws shall be borne by the members. • New rate will be applicable in case of delay in payment terms. Terms & conditions will be as per separate agreement. • This brochure is meant only for information, presentation & guidance purposes, It is not an authorized document or an agreement. This does not form the basis of any contract. • Variations may occur as per local regulations and developer's policy of improvement.