



GREEN  
COUNTY



SOUTH GUJARAT'S LEADING REAL ESTATE DEVELOPER

Derived from the word 'Prime', Pramukh was established in the year 1993, and is on the path of delivering iconic and class apart projects since then. Pramukh group has been providing aesthetically appealing and comfortable properties in Surat, Vapi, Silvassa and Umbergaon. Over the last 30 years, we have enjoyed the patronage of over 13,000+ families, with more than 17 million Sq. Ft. constructed floor space.

Welcome To 'A Class of Its Own'

20 ONGOING PROJECTS IN 3 CITIES Surat, Vapi & Silvassa

17 MILLION+ Sq. Ft. Delivered

8.4 MILLION+ Sq. Ft. Under Development

6700+ Homes in Progress

13,000+ Homes Delivered



ONGOING PROJECTS



4-5 BHK BUNGALOWS



PRAMUKH ARISTO

3-4-5 BHK APARTMENTS



3-4 BHK APARTMENTS



PRAMUKH DESTINY

2-3 BHK APARTMENTS



PRAMUKH AURA

2-3 BHK APARTMENTS



PRAMUKH SAHAJ

1-2 BHK APARTMENTS



VIVAN

1.5-2 BHK APARTMENTS

ORBIT

OFFICES & SHOWROOMS







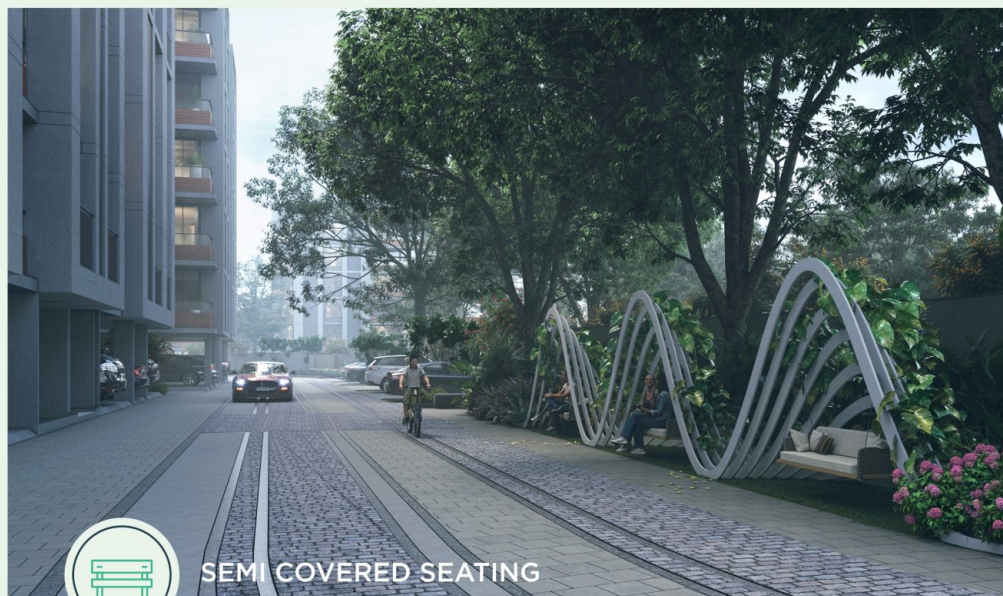
MAIN ENTRANCE GATE







ENTRANCE WATER FEATURES



SEMI COVERED SEATING



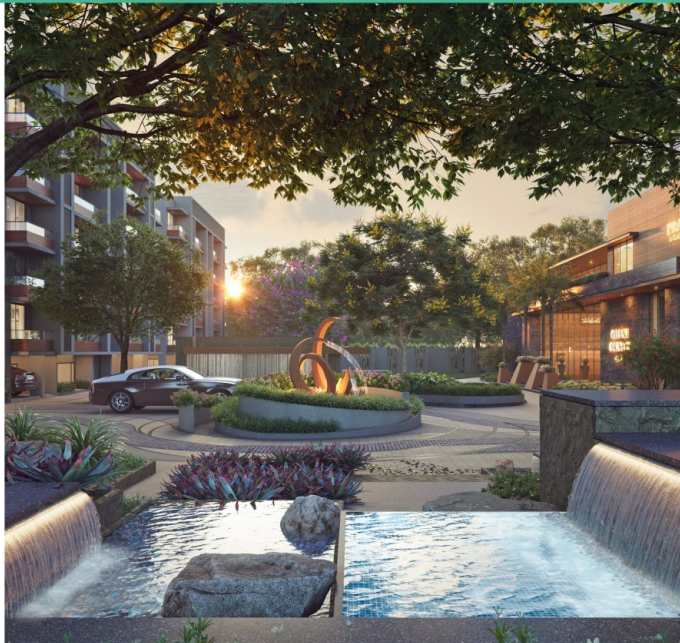
BUTTERFLY GARDEN







EXPERIENCE THE  
QUALITY LIVING











GREEN  
COUNTRY CLUB







## INDOOR AMENITIES



INDOOR  
SWIMMING POOL



GYM



YOGA /  
MEDITATION



STEAM &  
SAUNA



SPA



DOLBY  
THEATER



MEETING  
CONFERENCE



LIBRARY



INDOOR  
GAMES



TODDLER  
PLAY AREA



CAFÉ



DISCO & DANCE  
STUDIO

## OUTDOOR AMENITIES



ENTRANCE  
FEATURE



CHILDREN'S  
PLAY AREA



AMPHITHEATER



TEMPLE AREA



MULTI-PURPOSE  
SPORTS COURT



CRICKET  
PITCH



PARTY  
LAWN



PARKING  
SPACE



WATER  
FEATURES



MINI GOLF  
COURT



TRAMPOLINE  
PARK



CULTURAL CENTER  
ENTRY PLAZA



CULTURAL  
CENTER



BUTTERFLY  
GARDEN



SCULPTURE  
GARDEN



STAGE



BUILDING  
ENTRY FOYER



FEATURE  
WALL







## GROUND FLOOR PLAN



### LEGEND

- |                                |                                |
|--------------------------------|--------------------------------|
| 01 ENTRANCE FEATURE            | 15 GOLF COURT                  |
| 02 ROUNDABOUT                  | 16 MULTIPURPOSE SPORTS COURT   |
| 03 WATER FEATURE               | 17 BASKETBALL COURT            |
| 04 PARTY LAWN                  | 18 AMPHITHEATER                |
| 05 STAGE                       | 19 SEMI COVERED SEATING        |
| 06 CAFETERIA                   | 20 FEATURE WALLS               |
| 07 BUTTERFLY GARDEN            | 23 TRAMPOLINE PARK             |
| 08 SCULPTURE GARDEN            | 22 DENSE PLANTING WITH SEATING |
| 09 KIDS PLAY AREA              | 23 LEVELED SEATING             |
| 10 SEATING AREA                | 24 YOGA AND MEDITATION AREA    |
| 11 TEMPLE AREA                 | 25 KIDS PLAY AREA              |
| 12 TODDLER'S PLAY AREA         | 26 SHADED SEATING              |
| 13 CULTURAL CENTER ENTRY PLAZA | 27 BUILDING ENTRANCE FOYER     |
| 14 CULTURAL CENTER             |                                |





**TYPICAL  
FLOOR PLAN**

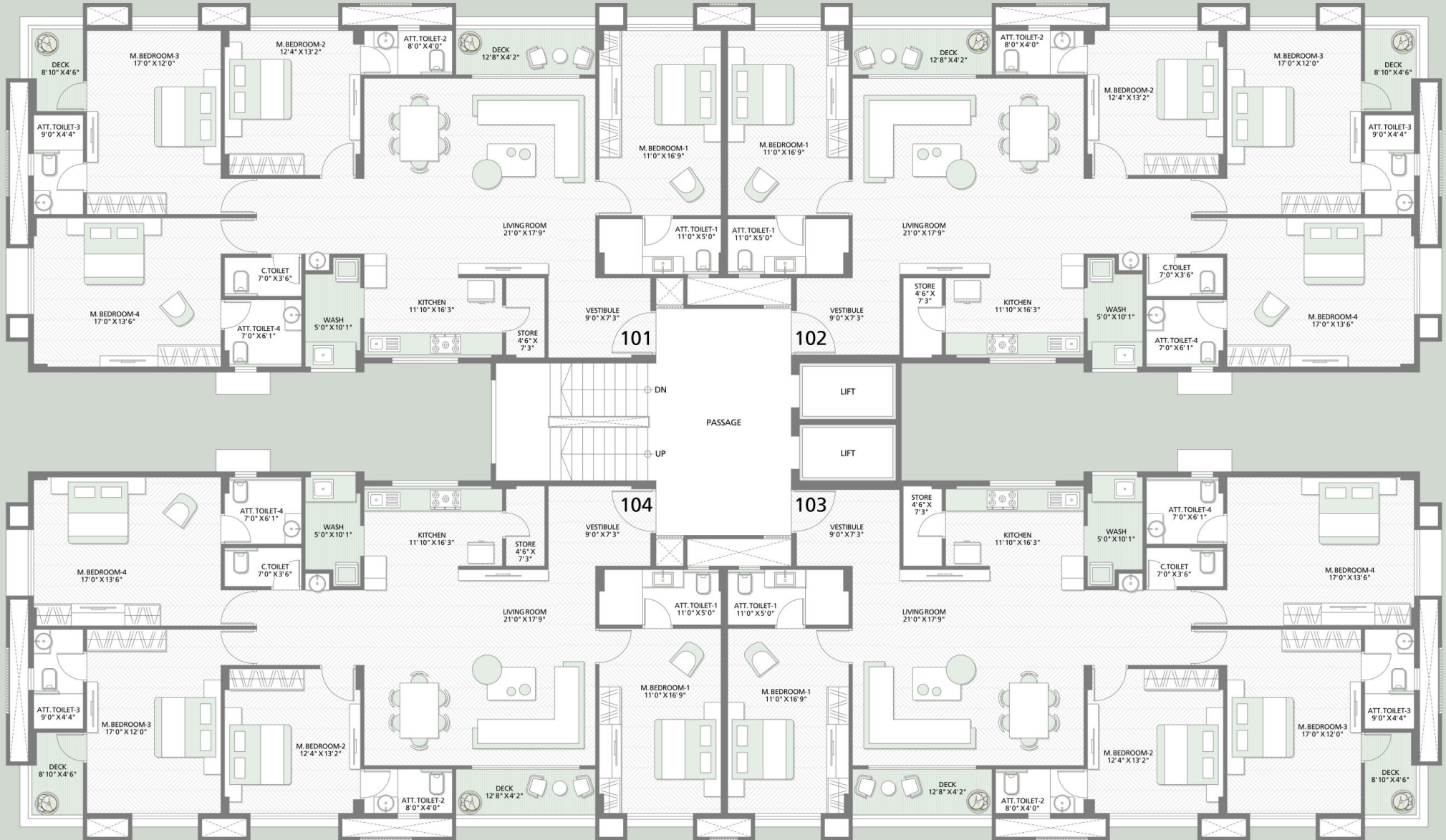






# 4BHK UNIT PLAN

## BLOCK - B

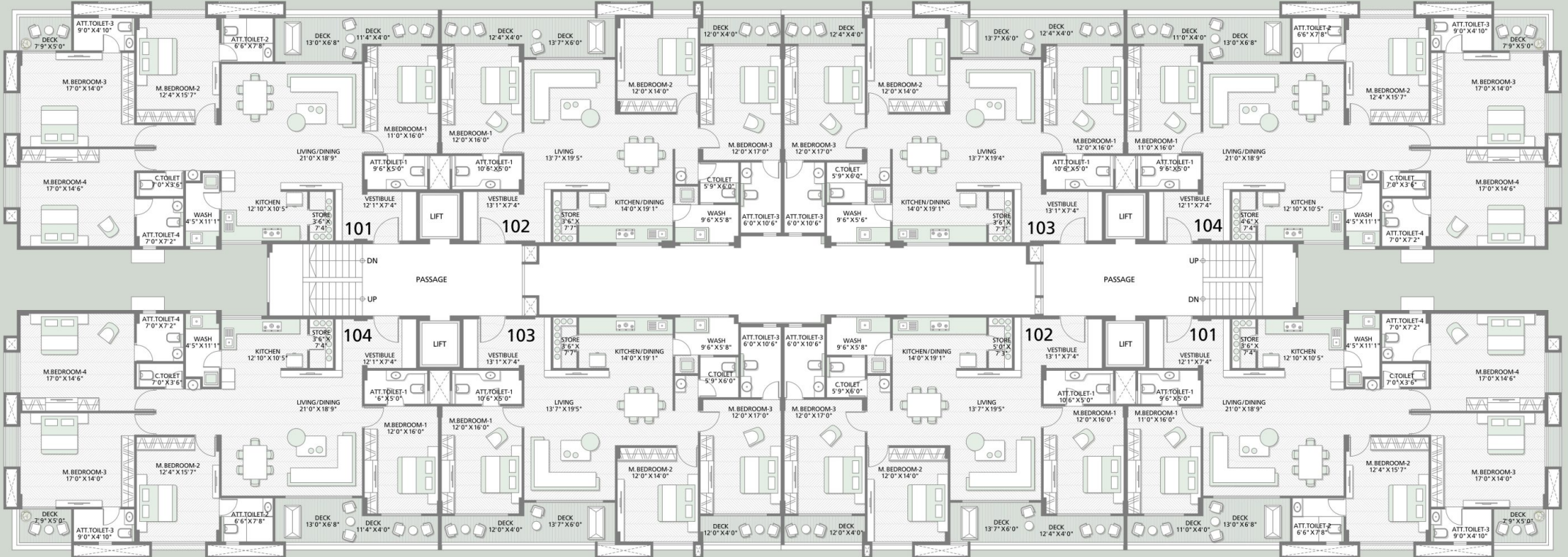






# 3 & 4BHK UNIT PLAN

BLOCK - C,G







## SPECIFICATION



### FLOORING

- 32 x 64 Vitrified Tiles By reputed brand



### KITCHEN

- Granite top with a stainless steel sink, designer ceramic tiles dado on the kitchen counter up to the lintel level.



### DOOR & WINDOWS

- Flush door with laminate on both sides. All door frames covered with granite and marble sills. High-quality anodized aluminum sliding windows.



### TOILET

- Designer Tiles on the Floor and Walls up to the lintel level by Reputed Brand.



### CP AND SANITARY FITTING

- Concealed Toilet Fittings & Sanitary Ware of Reputed Brand



### WATER SUPPLY

- Concealed Plumbing Line • Centralized Water Supply System



### ELECTRICAL WORK

- Branded modular Switches; Concealed Copper Wiring with an adequate number of points in all rooms and an MCB distribution panel for safety.

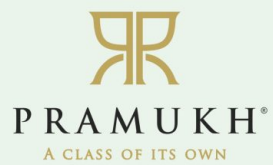


### ELEVATORS

- 8 passenger High-Speed Automatic Elevators for Escalating comforts.







Developers  
Pramukh Venture

**SITE ADDRESS**  
Nr. Raj Rajeshwari Vidhya Mandir,  
Charwada, Gunjan - Vapi 396195

**CORPORATE ADDRESS**  
Pramukh Group, Besides Bhatela Party Plot,  
Challa-Daman Main Road, Challa - Vapi 396195

**BOOKING CONTACT**  
875837 0000  
97270 13355

www.pramukh.co.in  
inquiry@pramukh.co.in

**ARCHITECTS**  
ADDA Architects - Surat

**STRUCTURAL CONSULTANTS**  
Technocrat Consultants - Surat

**LANDSCAPE ARCHITECTS**  
Earthscapes - Ahmedabad

**MEP CONSULTANTS**  
Malwawala Engineering Services Pvt. Ltd - Mumbai

**DISCLAIMER:** Premium quality materials or equivalent branded products shall be used for all construction work. • DGVCL charges, gas charges, legal charges and other Govt. charges shall be paid separately. • Maintenance deposit shall be paid separately. • Right of any changes in dimensions, design & specifications will be reserved with the developer, which shall be binding for all members. • External changes strictly not allowed. • Stamp duty, registration fees, and service tax charges on allotment and possession of the property shall be borne by the purchaser, applicable as per prevailing law. • Any additional liabilities due to change in the by-laws, stamp duty govt. laws shall be borne by the members. • New rate will be applicable in case of delay in payment terms. Terms & conditions will be as per separate agreement. • This brochure is meant only for information, presentation & guidance purposes. It is not an authorized document or an agreement. This does not form the basis of any contract. • Variations may occur as per local regulations and developer's policy of improvement.





PRAMUKH®

A CLASS OF ITS OWN