



VIVAN

1.5 & 2 BHK APARTMENTS

A PROJECT BY



PRAMUKH®

A CLASS OF ITS OWN



A HOME
THAT SERVES
AS A HOPE

Here at **Vivan**, with each new day, there's something new to look forward to. These exclusive homes have been designed to provide comfort at its prime.

Vivan offers **1.5 & 2 BHK** variants with more spaces for you to live a better life. More than luxury, we offer satisfaction at Vivan.

Pramukh Group's newest venture is centrally located to keep you connected to the entire city, it fits right into your budget and offers a penthouse to those who look for double the comfort; all of this with class at the centre of it all.



VIVAN | “विवान”

VIVAN MEANS 'THE RAYS OF THE RISING SUN'



When you witness the rising sun, it fills your life with hope. The rays brighten up your day with the happiness of experiencing a new beginning. The cool breeze and the calming surroundings of the morning blow away all the negativity and show you the positive side of life. Every sunrise at Vivan is a melody composed to awaken the best in you.

It's Time To Experience Life At Its Best

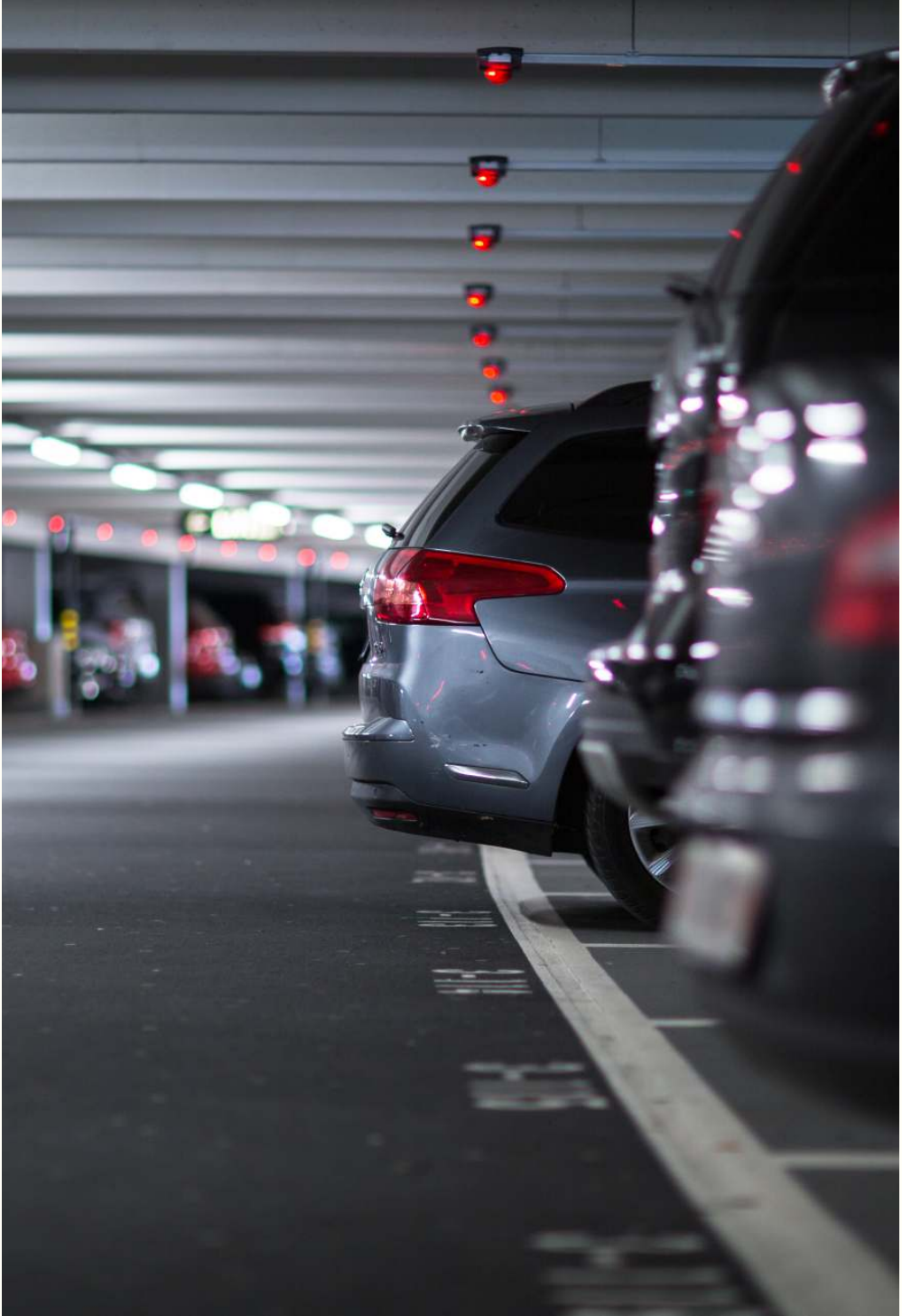
LIFESTYLE PRESENTED IN
A WHOLE NEW LIGHT



A LOCATION THAT CONNECTS YOU WITH THE ENTIRE CITY



BASEMENT PARKING THAT IS CONVENIENT FOR ALL



A LIFESTYLE THAT SHOWS
YOU WHAT
LUXURY ACTUALLY LOOKS LIKE



AMENITIES FOR ONE & ALL TO ENJOY AND CHERISH







AMENITIES



Temple



Senior Citizen
Sit Out Area



Butterfly &
Aroma Garden



Drop off Zone



Informal &
Pergola Sit Out



Pedestrian
Walkway



GYM



Event &
Stage Lawn



Children's
Play Area



Net Cricket



Indoor Games



Multipurpose
Court



Multipurpose Hall

SPECIFICATIONS

- **FLOORING**

Vitrified tiles of reputed brand in living, dinning, kitchen and bedroom. Anti skid tiles in all bathrooms & balconies, Ceramic tiles in all bathrooms up to lintel level .

- **KITCHEN**

Granite top kitchen platform with stainless steel sink.

- **PAINT**

Exterior: Texture paint at exterior walls | **Interiors:** Primer finish.

- **DOOR AND WINDOWS**

Decorative main entrance door, all internal flush door, anodized aluminum windows of high quality.

- **PLUMBING**

CP fittings & sanitary ware of reputed brand.

- **ELECTRIFICATION**

Modular switches of reputed brand, appropriate lighting & earthing protection, adequate electric points.

- **TOWER FEATURES**

Security, CCTV surveillance, 24 hours manned security at main gate.

- **ELEVATORS**

Latest hi-speed automatic lifts of reputed brand with elegant interiors.

- **WATER SUPPLY**

Underground water tank, Concealed plumbing line, Energy efficient hydro-pneumatic system for water supply.

- **Parking**

Basement parking, Stilt Parking & Open Parking Area.

- **FIRE FIGHTING**

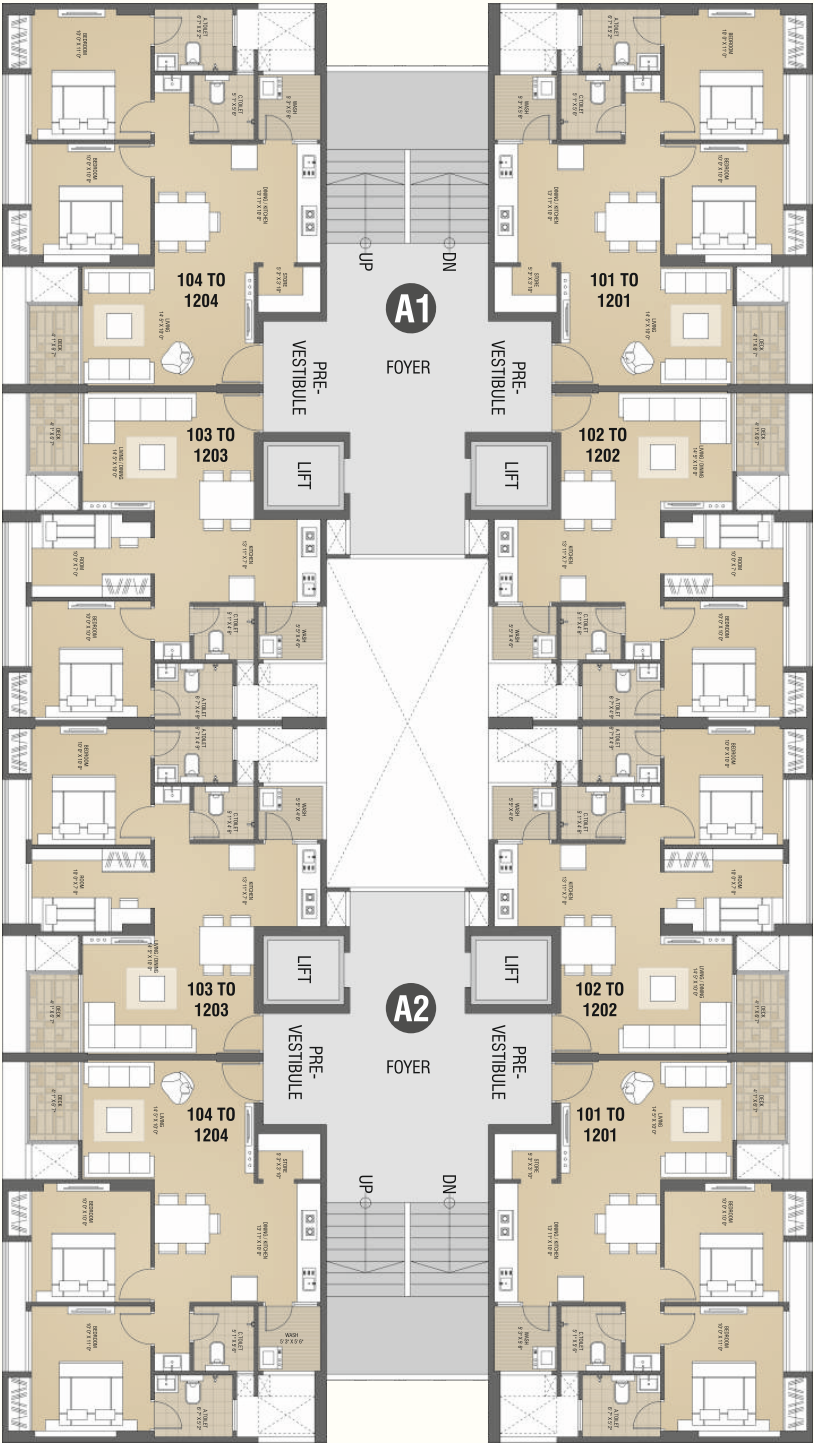
Firefighting as per rules & regulation.

TYPICAL FLOOR PLAN



FLOOR PLAN

A & B Tower

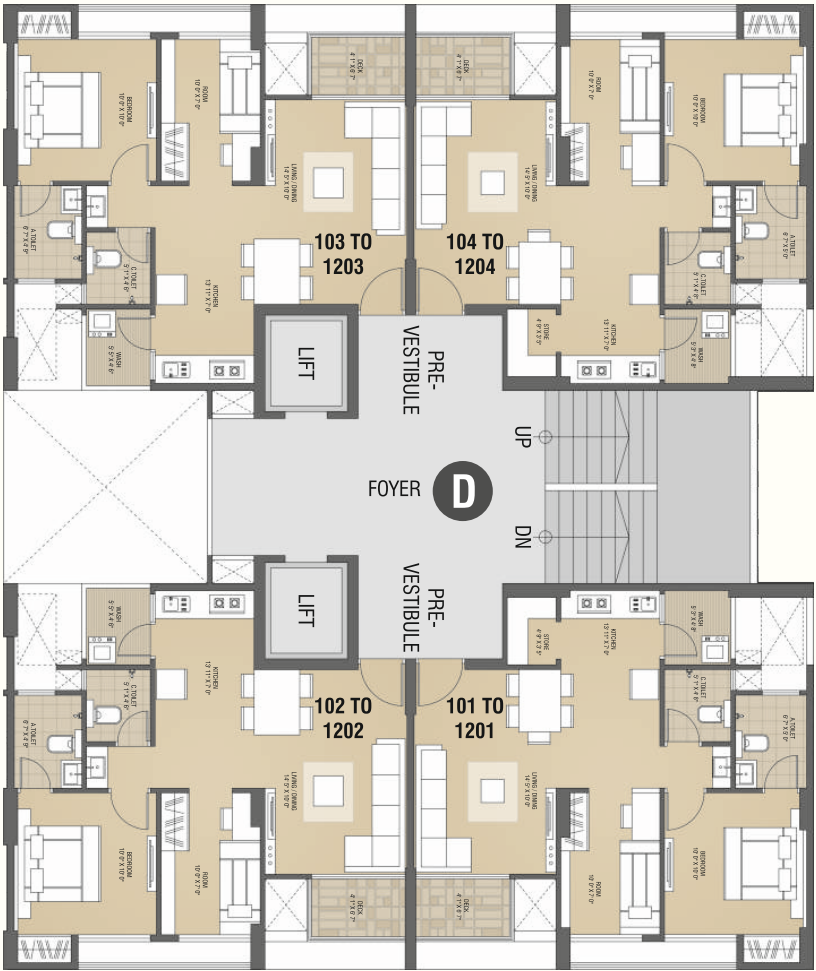


C Tower



FLOOR PLAN

D Tower



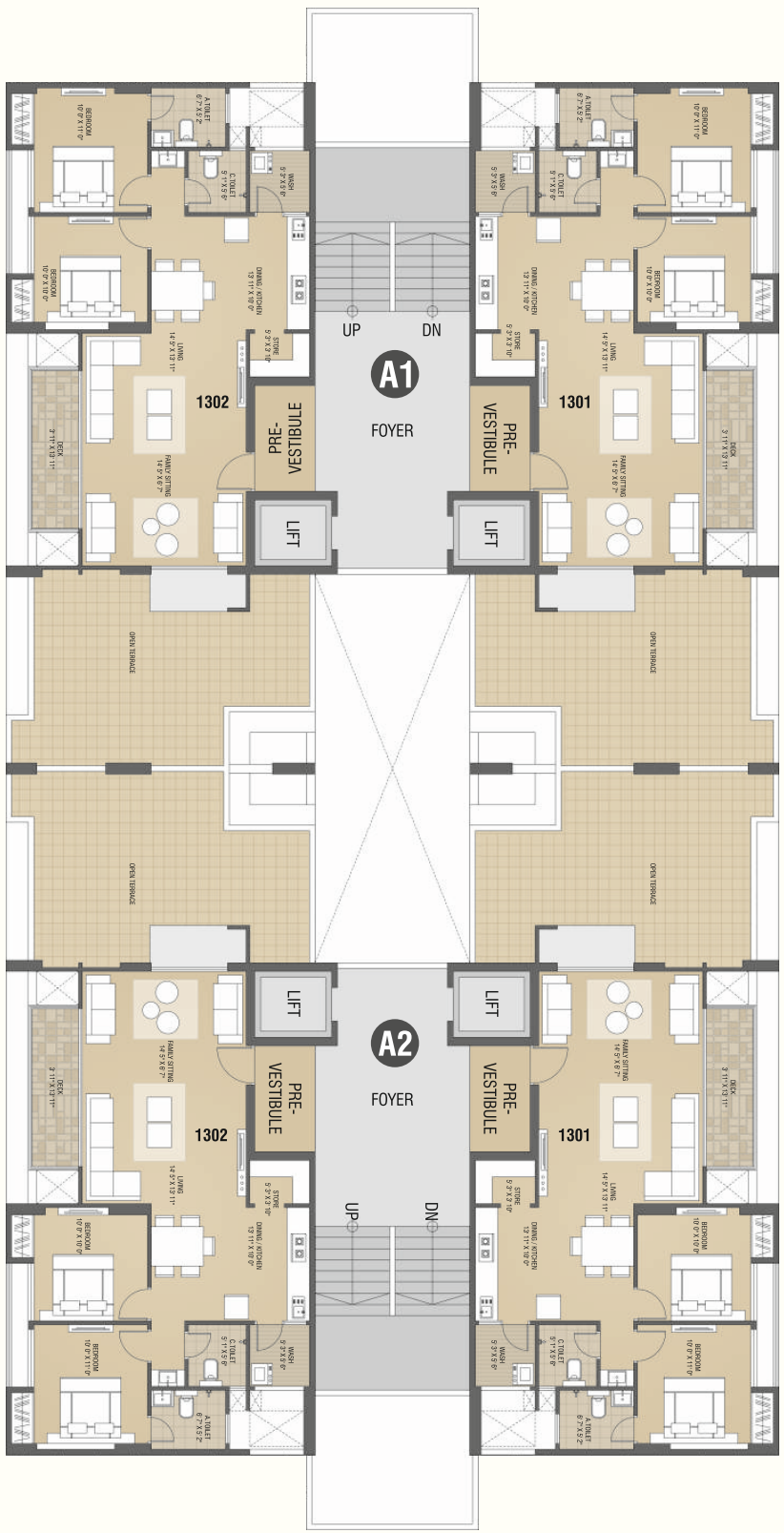
FLOOR PLAN

E Tower



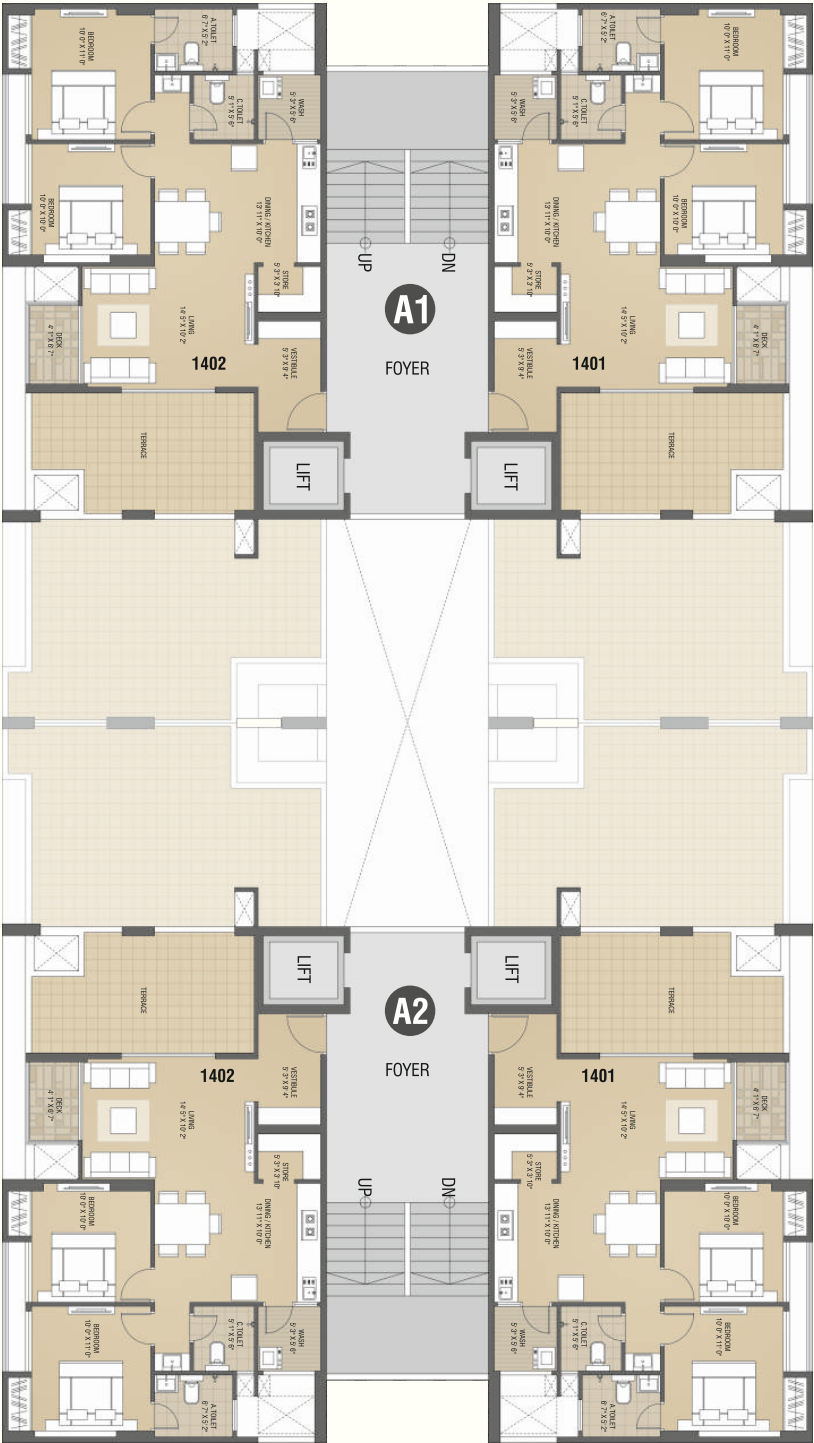
13th FLOOR PLAN

A & B Tower



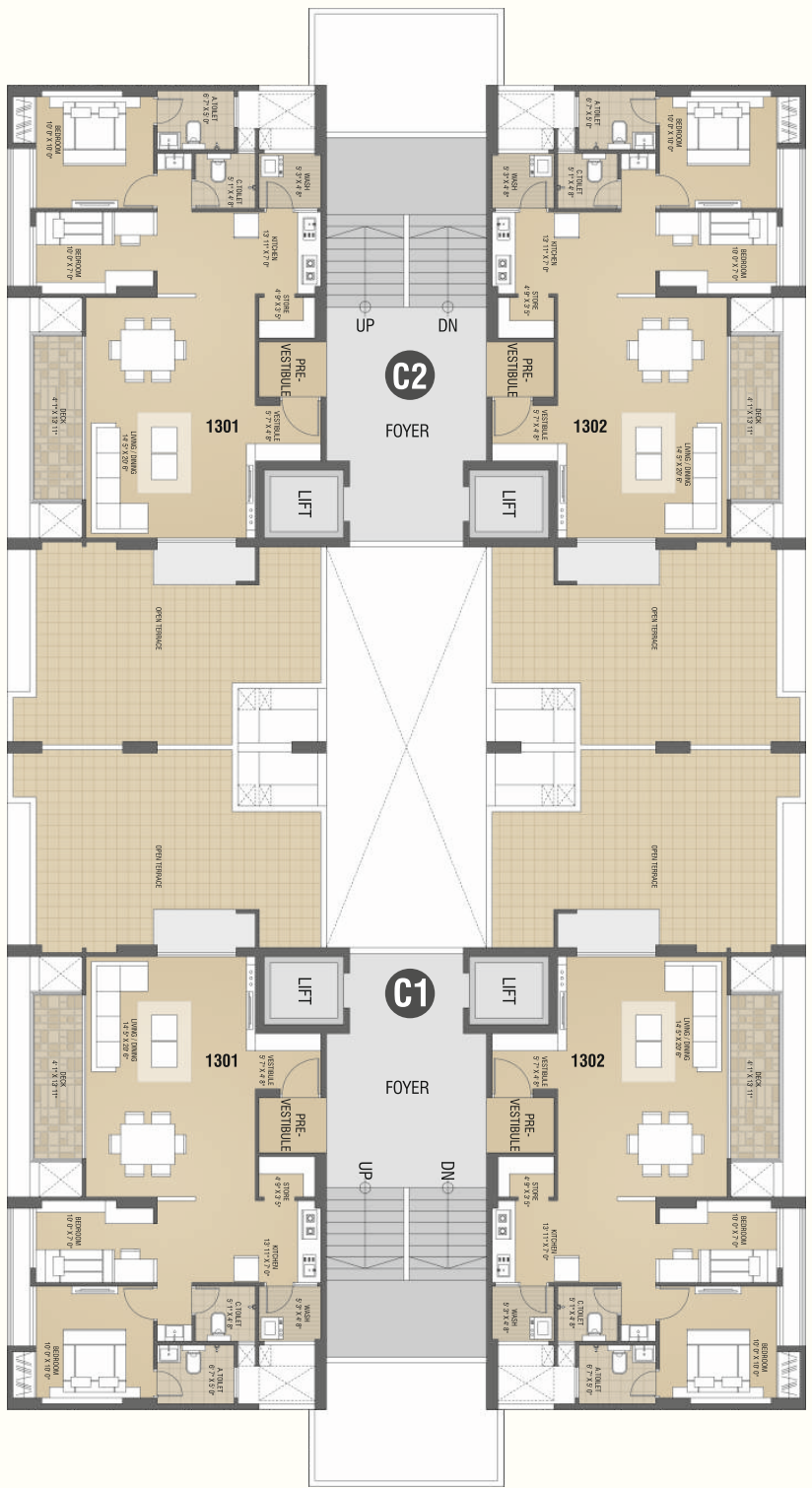
14th FLOOR PLAN

A & B Tower



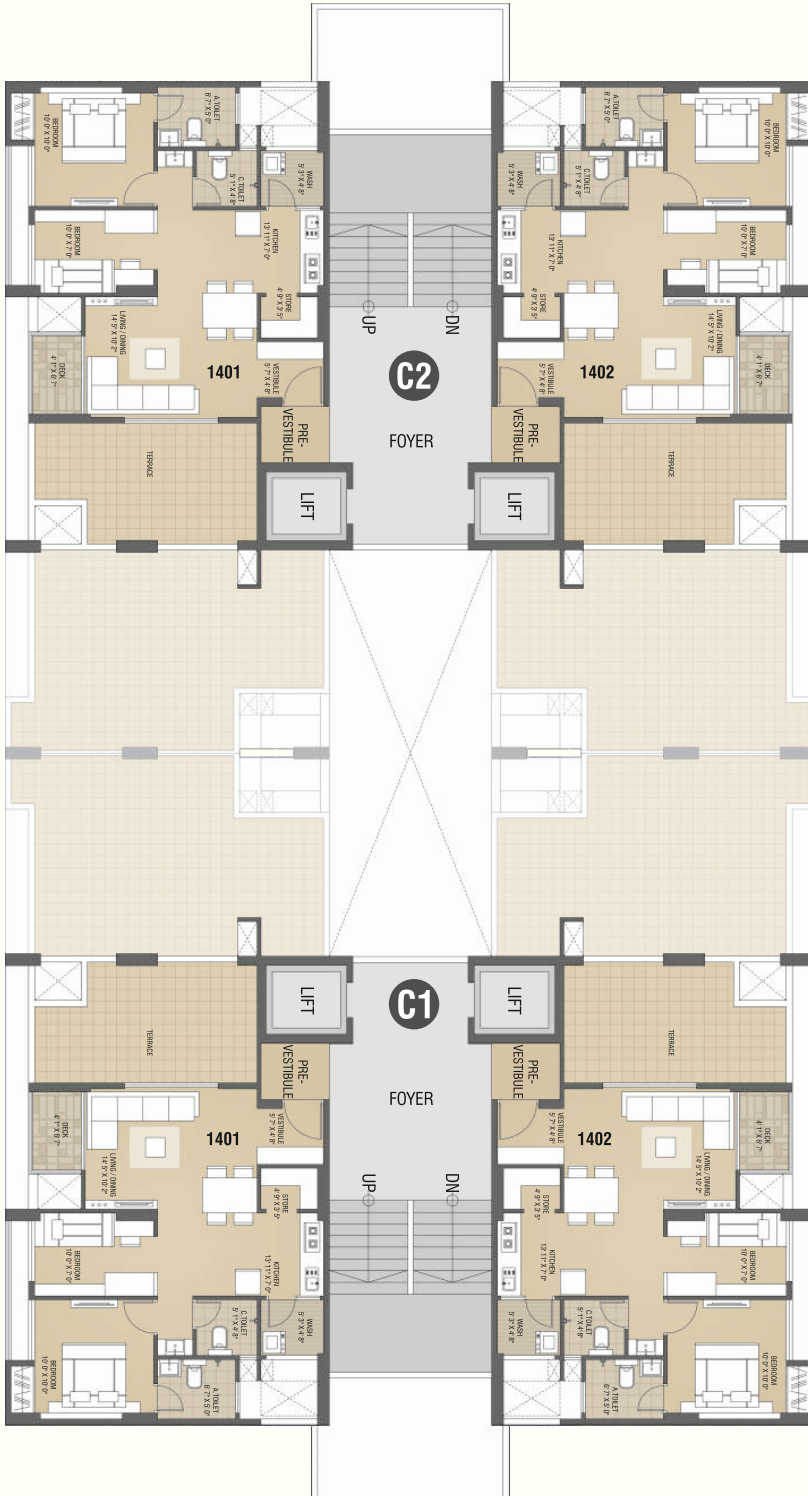
13th FLOOR PLAN

C Tower



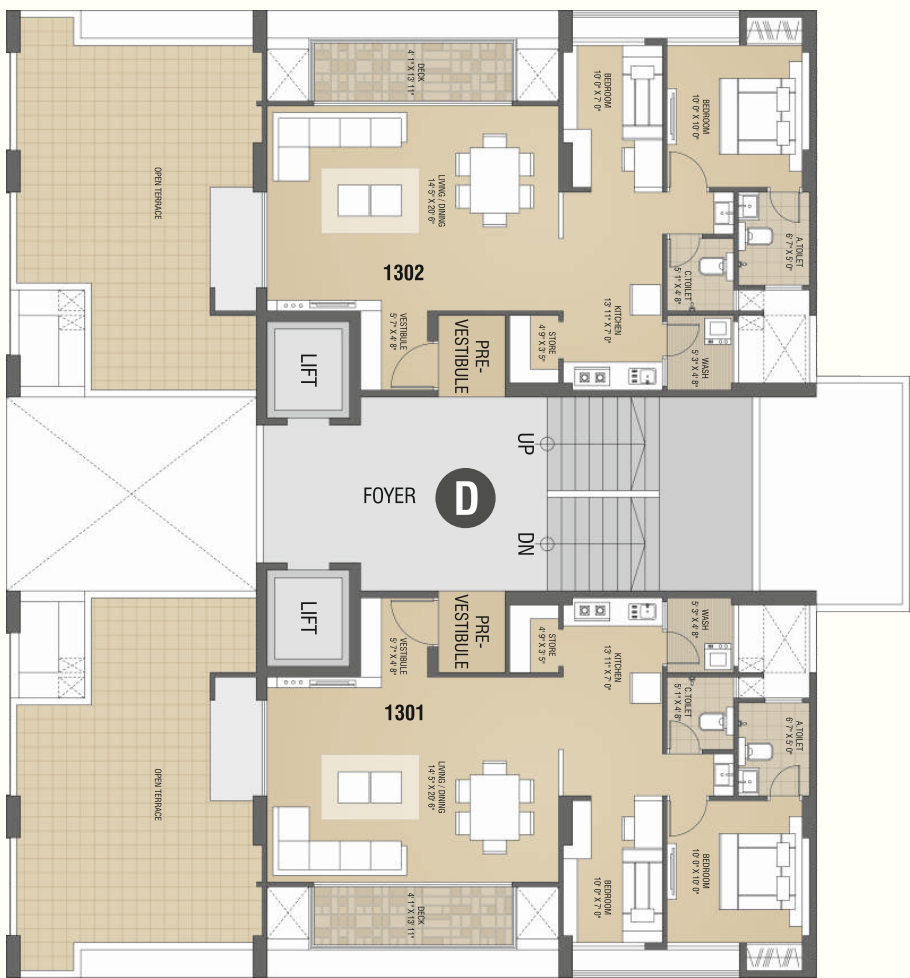
14th FLOOR PLAN

C Tower



13th FLOOR PLAN

D Tower



E Tower



SITE ADDRESS

Vivan, New Chala, Vapi, Gujarat-396191

BOOKING CONTACT

+91 74062 58000 | +91 97272 11666
inquiry@pramukh.co.in | www.pramukh.co.in

ARCHITECTURAL CONSULTANT

PDC Consultant

STRUCTURAL CONSULTANTS

Technocrat Consultant

DEVELOPER

Vivan Enterprise
Survey no. 1647, New Chala, Vapi, Gujarat-396191

MEP

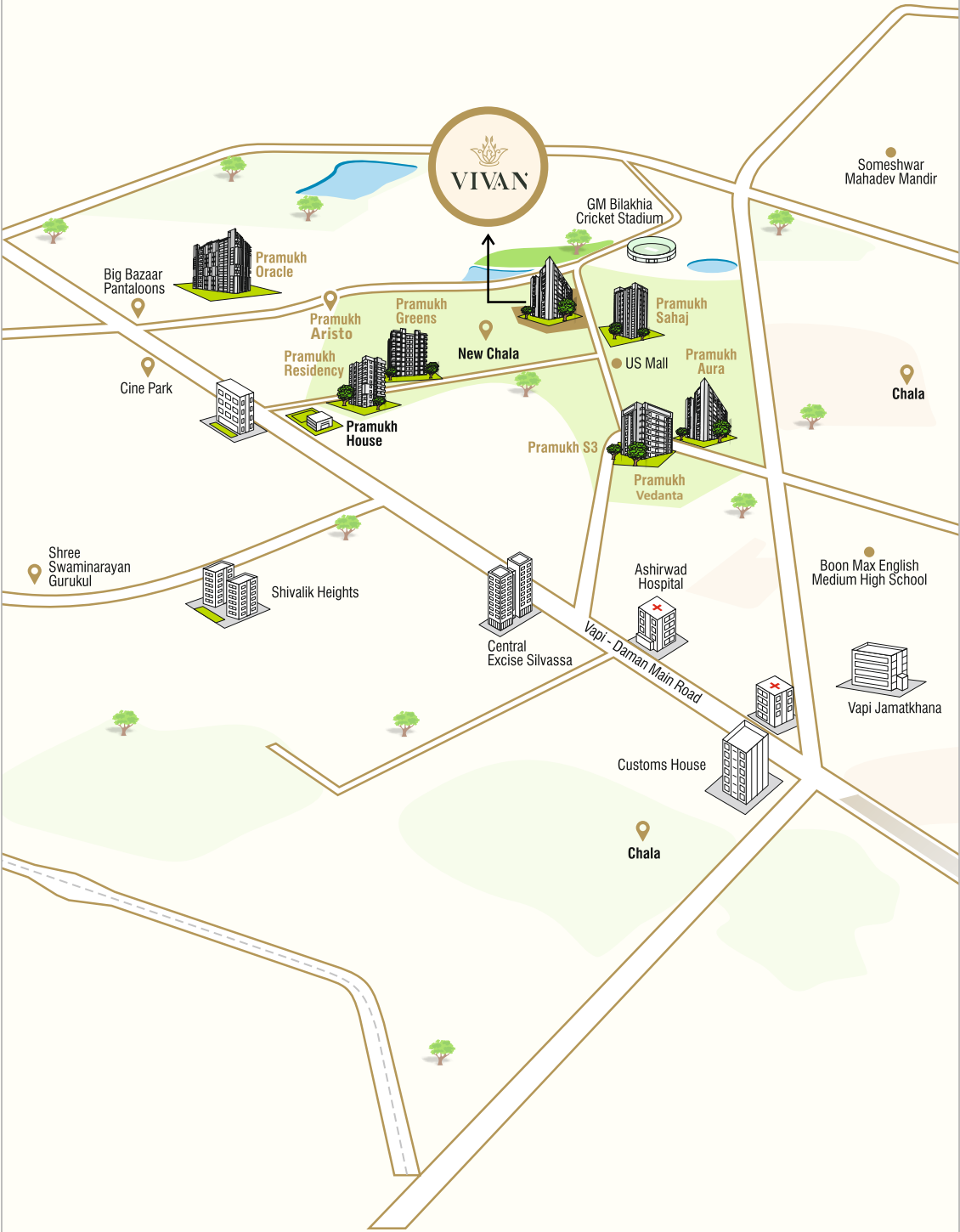
Malwawala Engineering Services Pvt. Ltd.

RERA REGISTRATION

PR/GJ/VALSAD/PARDI/Others/RAA10021/130422
www.gujrera.gujarat.gov.in

DISCLAIMER: Any amendments in rules & regulations by any authority will be bound to all members. All expenses of legal document, GEB, extra stamp duty, GST (if applicable), society maintenance will be borne by member. External changes shall not be allowed. Internal changes will be permitted with permission and extra cost. Members are bound to pay installments regularly and irregularity in payment may cause cancellation of booking. Developer reserves the right of any changes in the scheme & it shall be bound to all members. Developers holds the terrace rights. This brochure is only for private circulation for general information to the member & shall not form a part of any agreement. The views shown in the brochure are artist's impression only and not a legal offering and will not be part of the agreement.

LOCATION MAP





PRAMUKH®

A CLASS OF ITS OWN