





PLUS SIDE

How often does life fulfill a dream? Gives a sense of satisfaction? And makes it worth a while? The answer is simple, its everyday moments spent at home.

A home is an escape from the world; it's a sense of ownership and belonging for soul searchers. It's a fresh start and a stable foundation for families. And it's a plus side of life from where you can always begin again.

The 1.5 & 2 BHK luxurious apartments of Yogi Milan Plus by Pramukh grant you that sense of gratification. It becomes your comfort zone to relax and a capacious home to fill it with positive vibes. The locality of the largest residential location offers a friendly neighborhood that you were seeking. And despite having easy connectivity to the Ring Road, homes of Yogi Milan Plus fall into the affordable segment.



PLUS SIDE

Luxury comes with a price, but not at Yogi Milan Plus. With a magnificent space fit into a 2 BHK home, you will find positive sides of indulging in a luxurious yet comfortable home.





CHILDREN PLAY AREA



PLUS SIDE

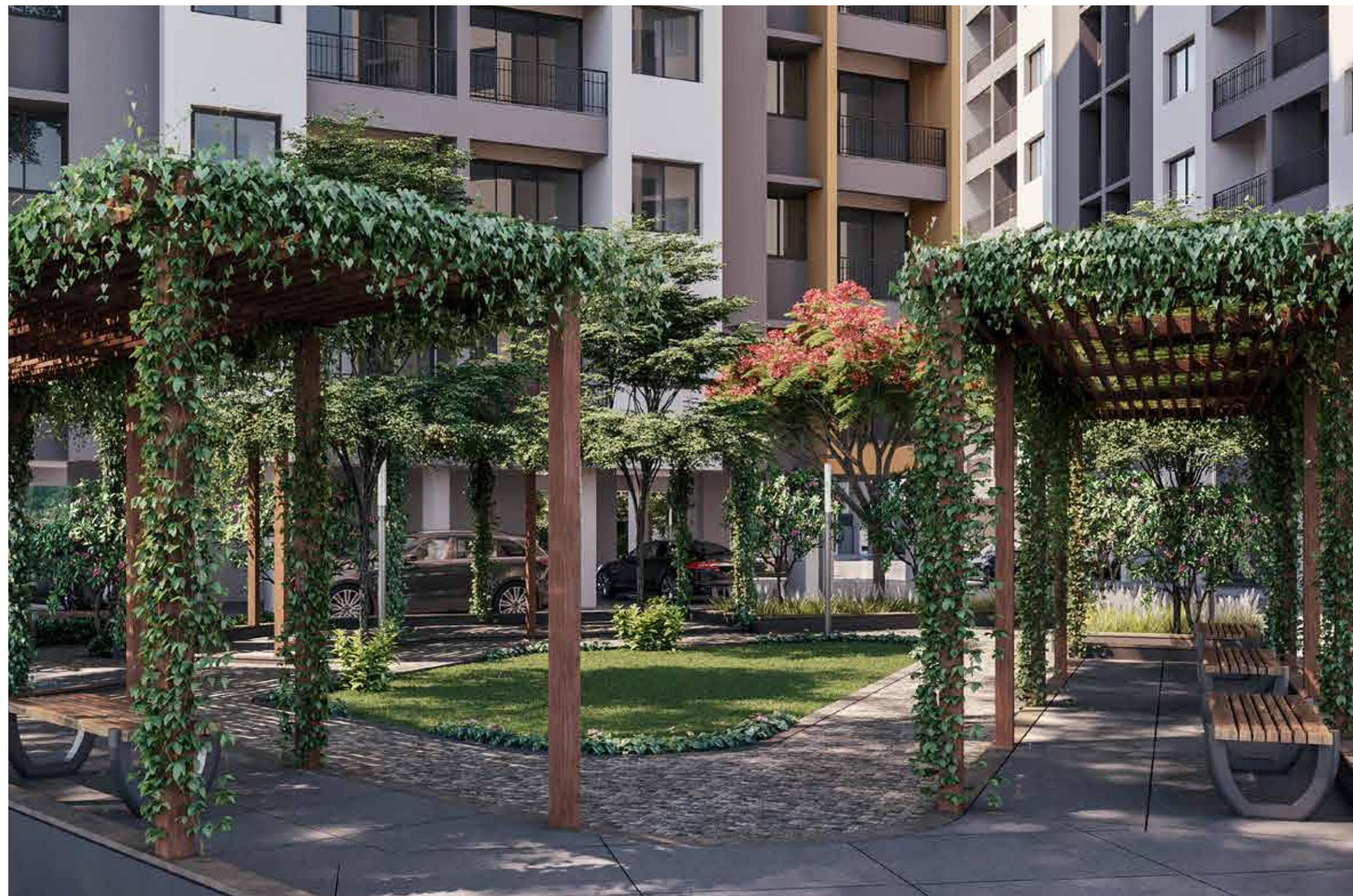
Surrounded by walls, Yogi Milan Plus becomes a safe haven for your children.
With a sizable play area for your kids in the society premise itself, their
smiles will stay under protection.



PLUS SIDE

Others may dwell in the city chaos, but at Yogi Milan Plus, every home ensures a tranquil experience. With an open lush view right inside the project premise, you connect with nature every day and can restore peace in your soul.





PLUS SIDE

When your society has generous space, your family can do many things without stepping out. And the large open areas of Yogi Milan Plus gives a chance to do much more than just living.



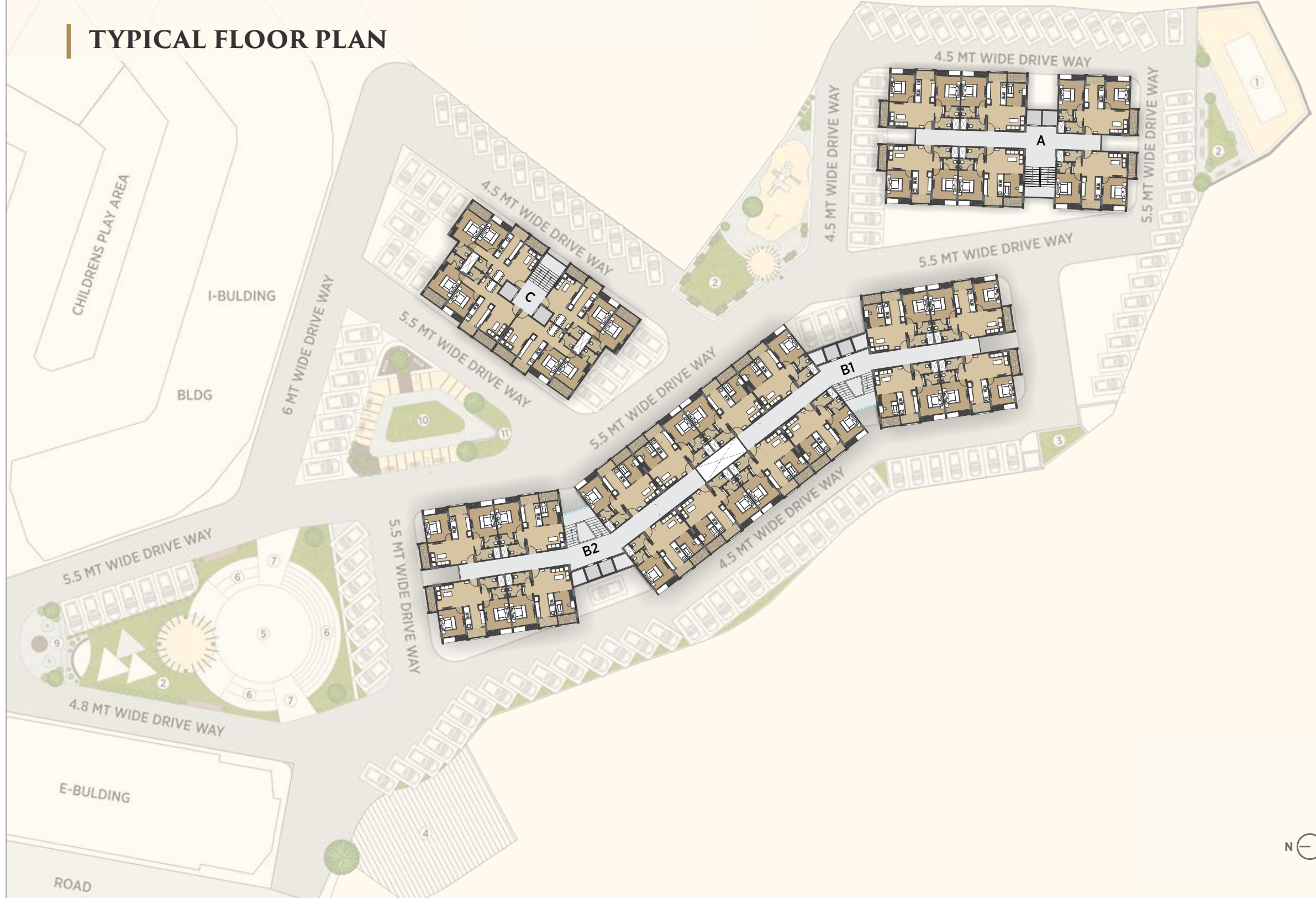
CRICKET NET





BIRD EYE VIEW

TYPICAL FLOOR PLAN



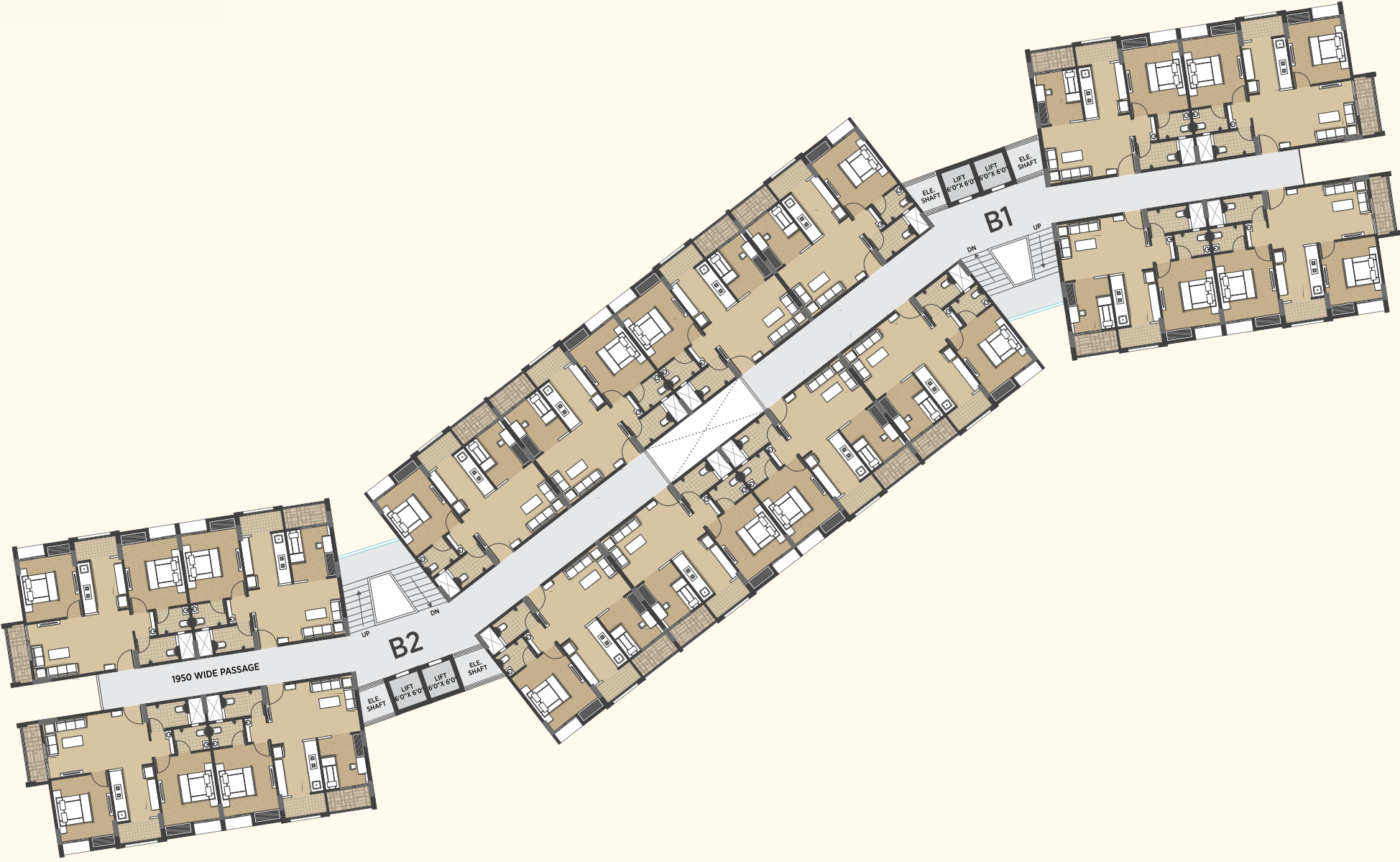
BLOCK - A

TYPICAL FLOOR PLAN

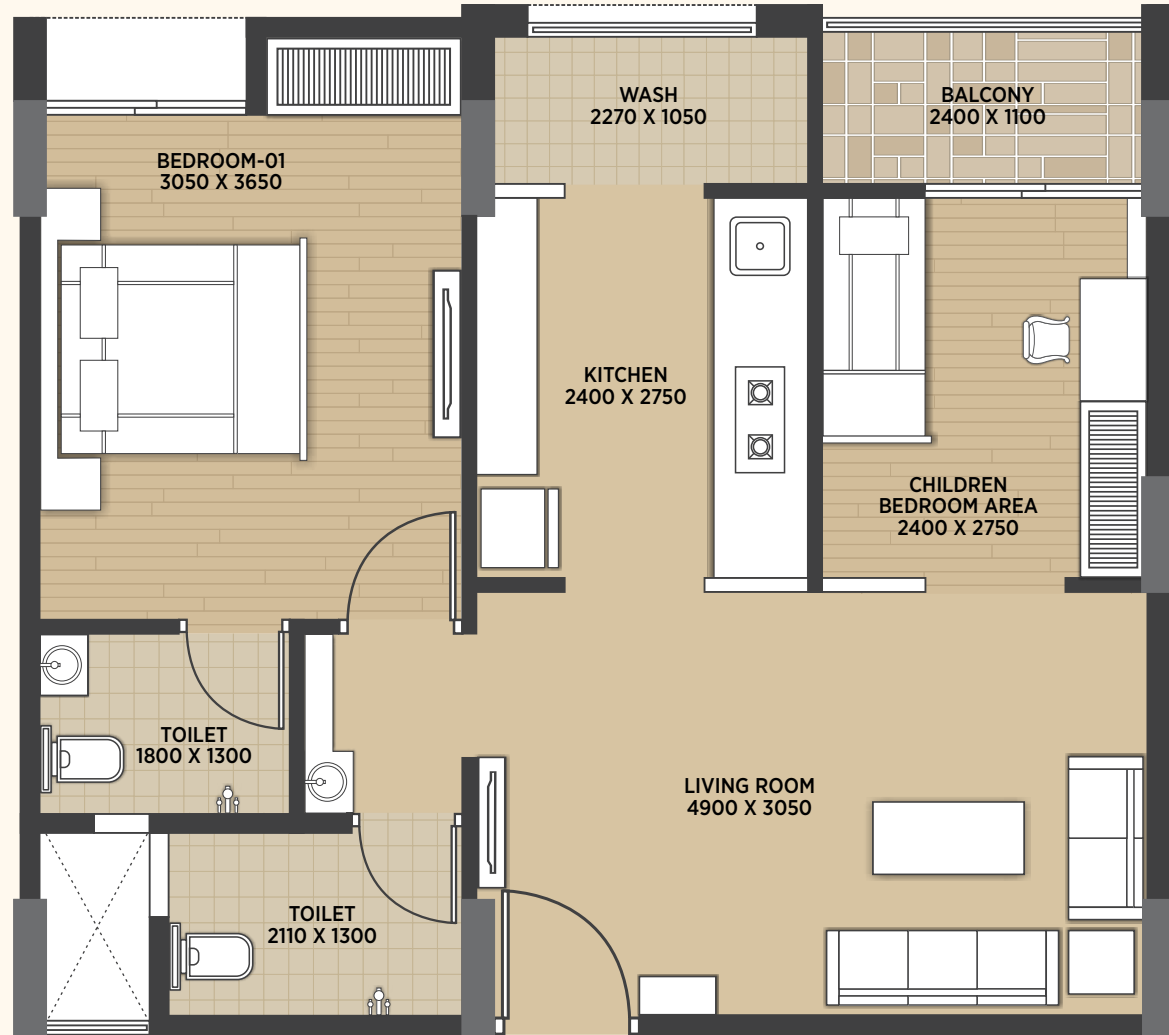


BLOCK - B

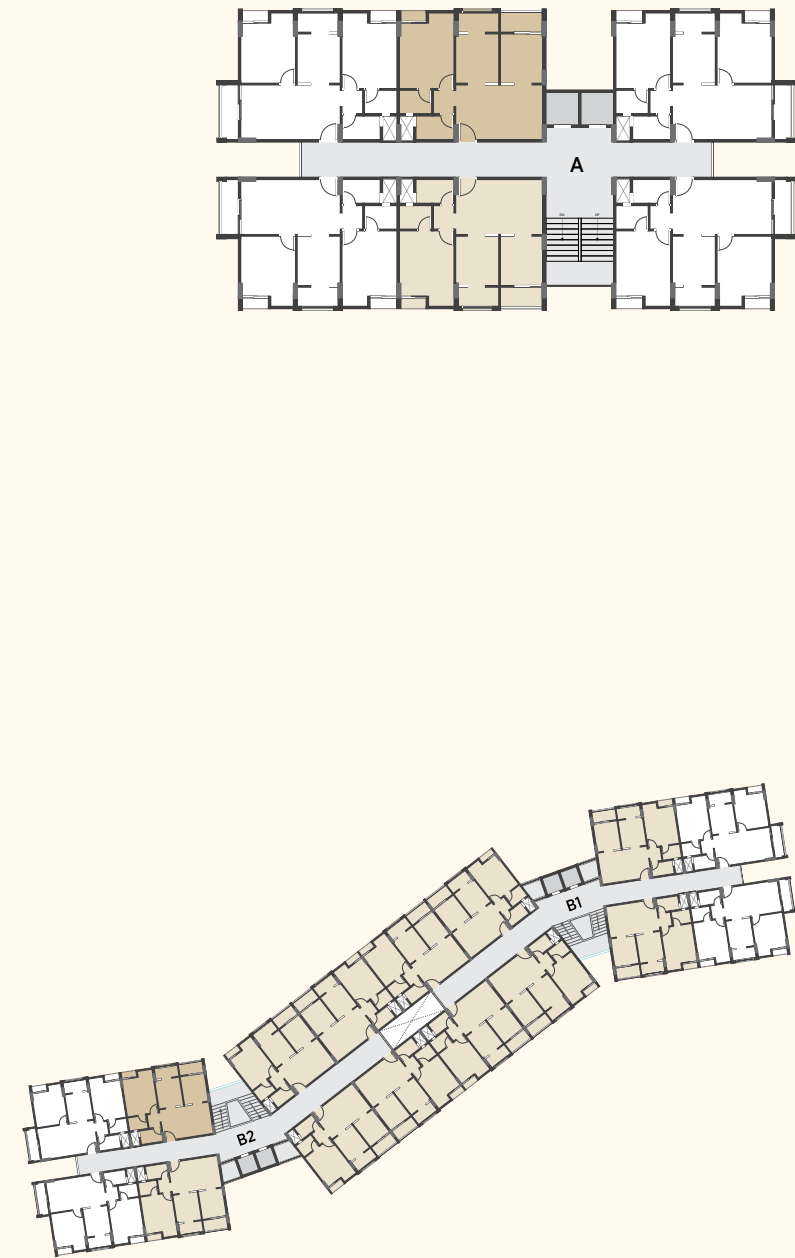
TYPICAL FLOOR PLAN



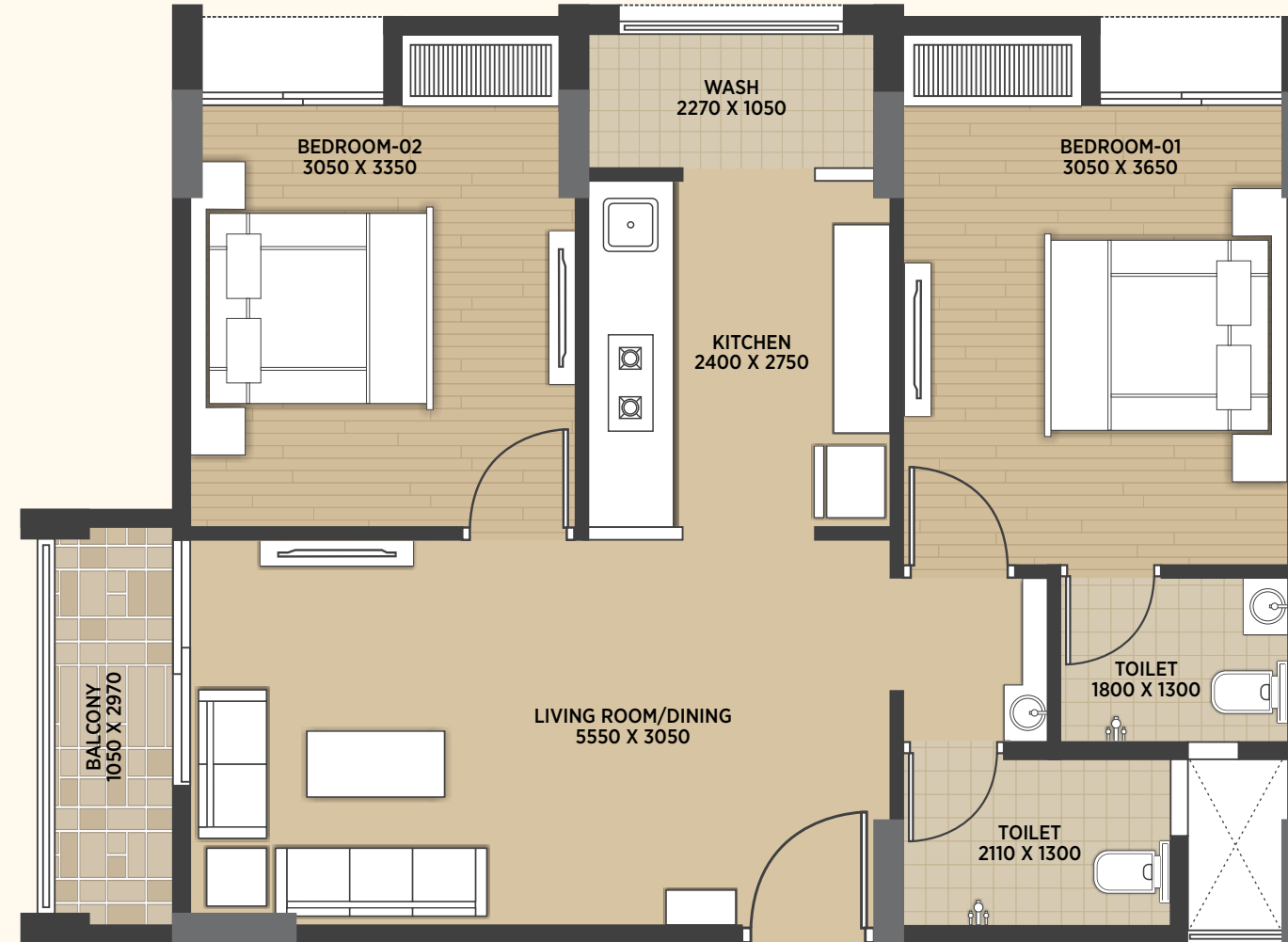
BLOCK - A & B



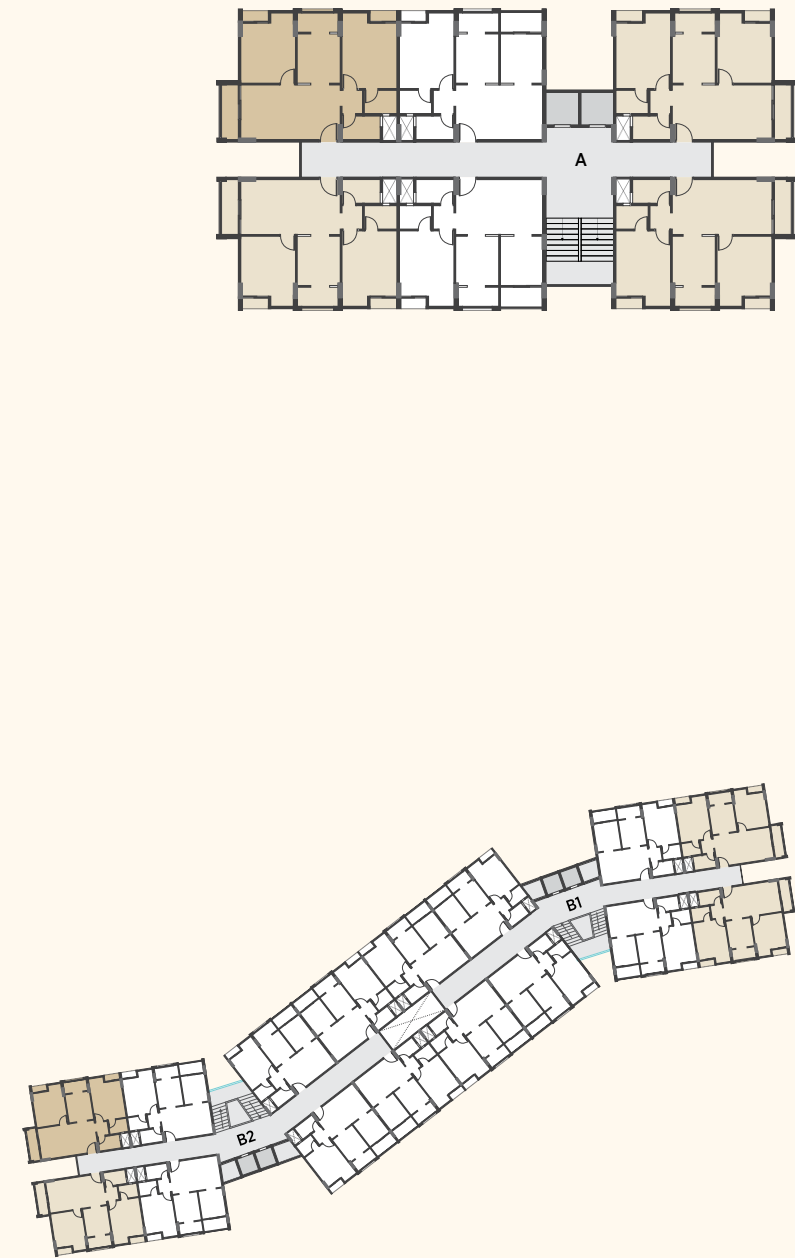
1.5 BHK | TYPE - 1



BLOCK - A & B

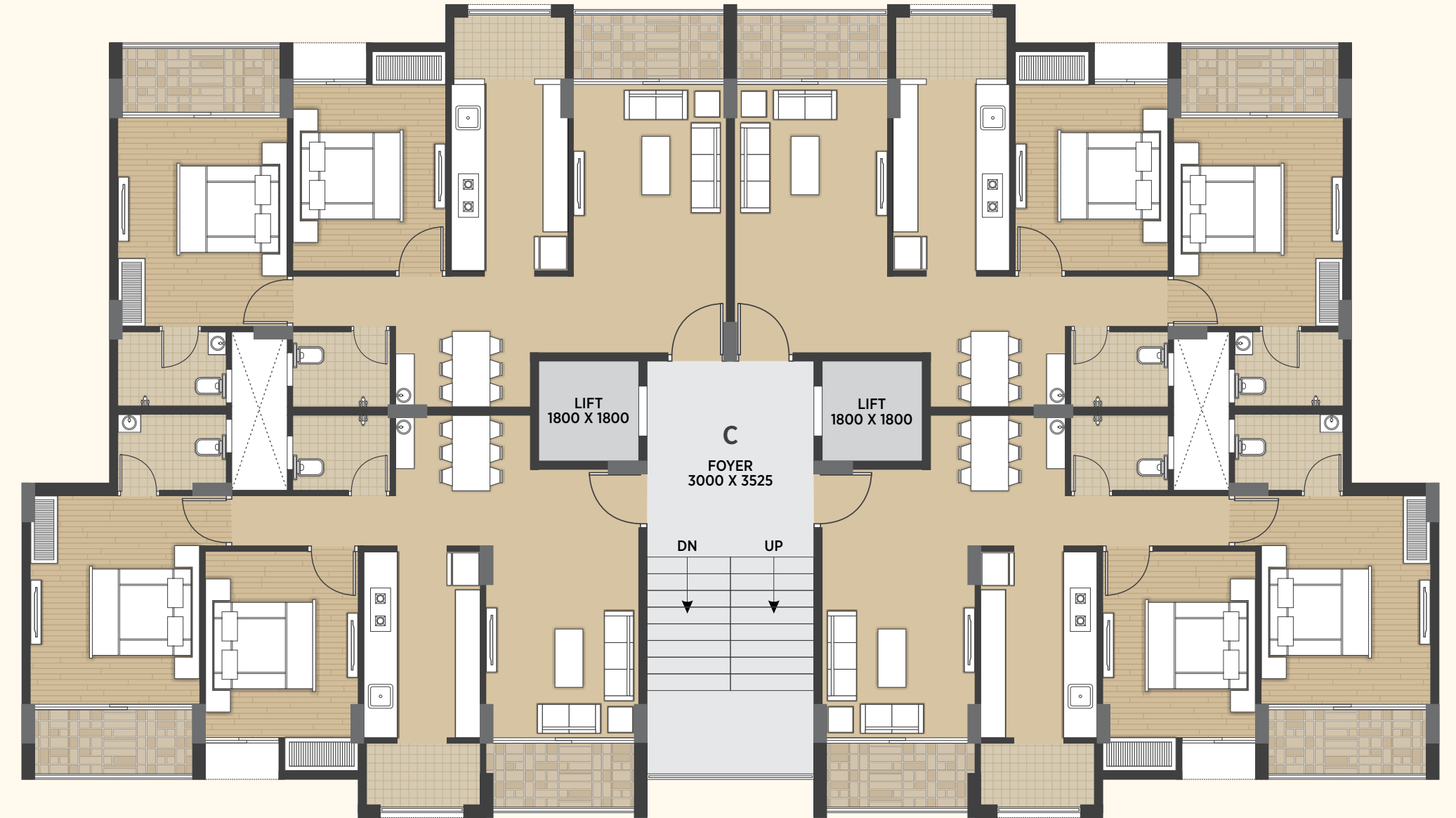


2 BHK | TYPE - 1

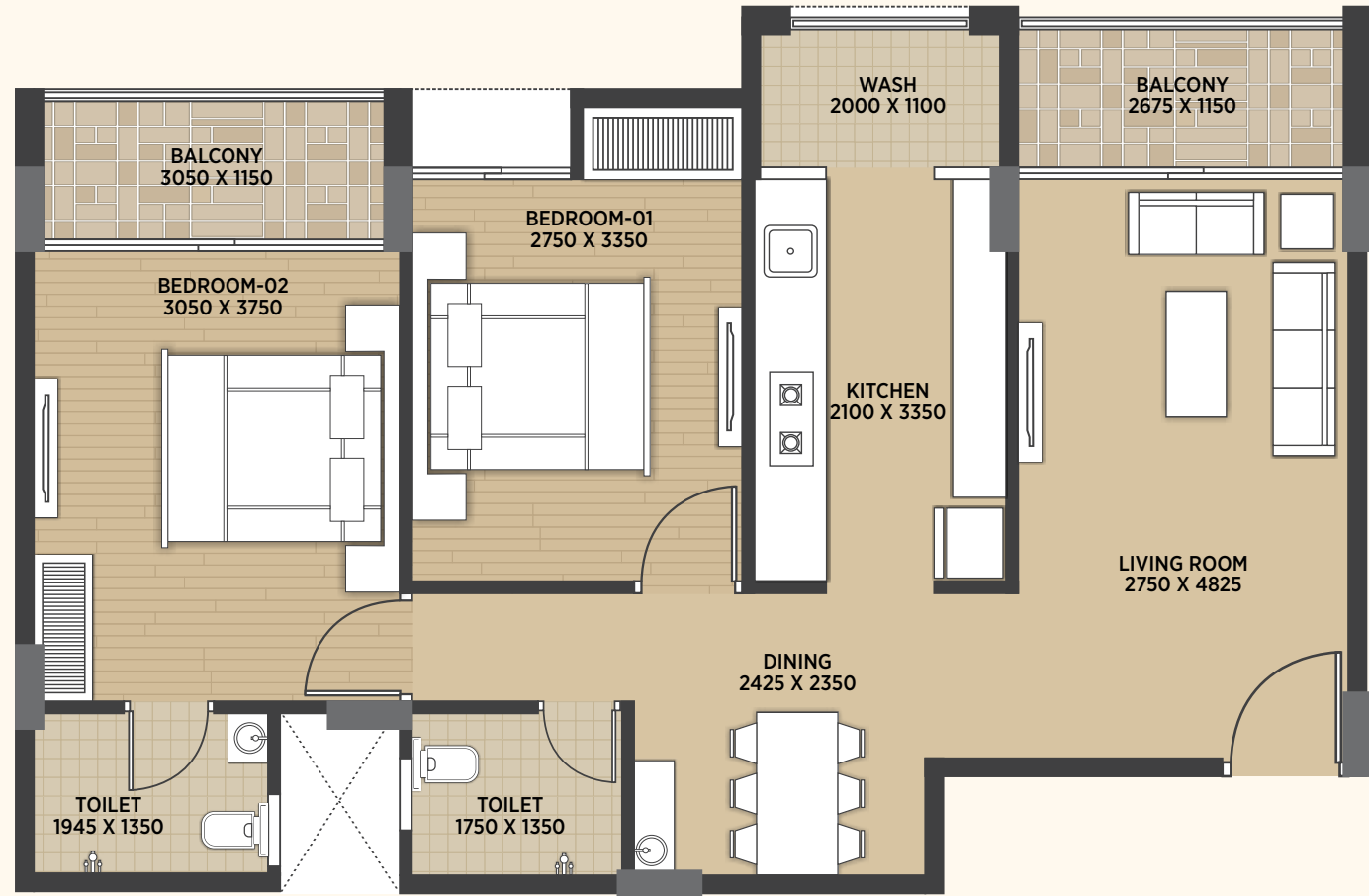




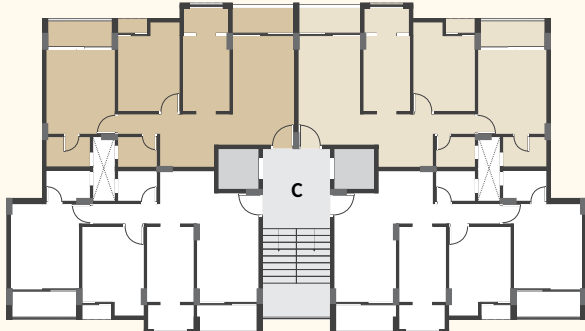
BLOCK - C



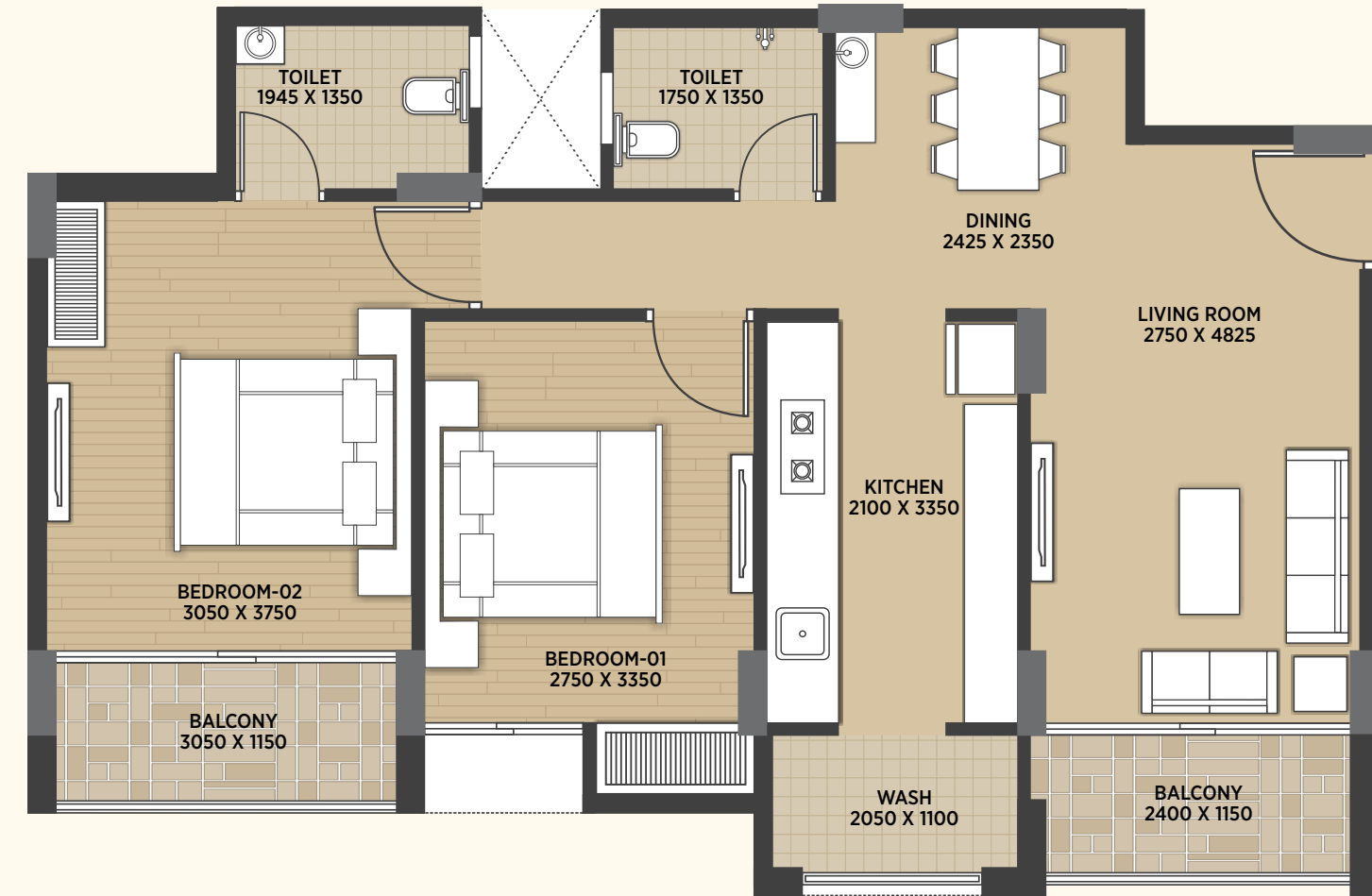
BLOCK - C



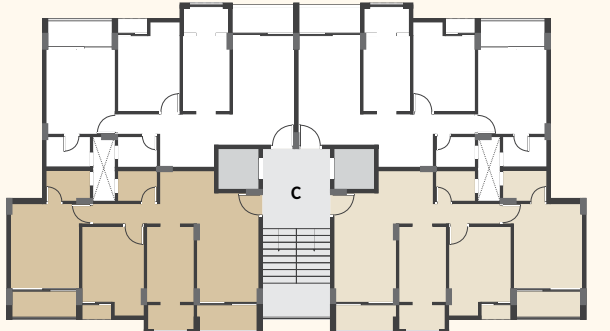
2 BHK | TYPE - 1










BLOCK - C



2 BHK | TYPE - 2



LUXURIOUS AMENITIES, SPECIAL FEATURES & SPECIFICATIONS

	Entrance Gate With Adequate Security
	Senior Citizen Seating Area
	Landscaped Garden With Jogging / Walking Track
	Two Auto Door Lifts Of Standard Quality
	Separate Water Supply Lines For Domestic And Flushing Water
	Trimix Finished Road With Adequate Pole Lights
	Power Back-up For Common Amenities
	Amphitheatre
	Children's Play Area
	Cricket Net
	CCTV Surveillance
	Ample Parking

- **FLOORINGS** - 24” X 24” vitrified tiles in all areas.
- **WALLS** - Internal walls and ceiling-mala plaster with wall putty, external walls - double coat sand-face plaster with apex paint.
- **KITCHEN** - Kitchen platform with granite top and stainless steel sink, designer ceramic tiles, dado in kitchen counter up to lintel level.
- **DOOR & WINDOWS** - Main entrance door-solid core flush door with both sides molded, designer door skin, other flush doors with both sides laminate. Powder Coated aluminum sliding windows with mosquito net in one, shutter with quality bearing, fittings, stone sills, and jambs.
- **TOILET** - Designer tiles up to lintel level, branded C.P. Faucets, branded range of ceramic vessels.
- **PLUMBING** - C.P.V.C. water supply pipes and tough/durable Finolex PVC drainage pipe for soil, waste, and drainage systems.
- **WATER SUPPLY** - Centralized water supply system.
- **ELECTRICAL WORK** - Branded modular switches, concealed copper wiring with an adequate number of points in all rooms, bedroom & master bedroom will have AC & cable points. MCB distribution panel for extra safety, automation elevators for escalators for escalating comforts.
- **ROOF** - Bricks-bat concrete for heat reflection and thermal insulation



SOUTH GUJARAT'S LEADING REAL ESTATE DEVELOPER

Derived from the word ‘Prime’, Pramukh was established in the year **1993**, and is on the path of delivering iconic and class apart projects since then. Pramukh group has been providing aesthetically appealing and comfortable properties in Surat, Vapi, Silvassa and Umbergaon.

Over the last **25 years**, we have enjoyed the patronage of over **12,000+** families, with more than **12 million Sq. Ft.** constructed floor space. Currently, **6700+** homes i.e. **8 million Sq. Ft.** area is under development.

Being one of the prominent contributors in building the real estate infrastructure in Silvassa, Pramukh group is a sought-after brand. After the grand success of **Yogi Milan**, we are now here with **Yogi Milan Plus**. Situated in one of the most desired areas of the city, it is well-connected to **Amli Ring Road**. The area is covered by a lot of residential projects, and Yogi Milan & Yogi Milan Plus have the **highest number of units** in that area.

Welcome to Yogi Milan Plus, Silvassa
Welcome To ‘A Class Of Its Own’



12 MILLION+
Sq. Ft. Delivered




9 ONGOING PROJECTS
In 3 Cities (Surat, Vapi, Silvassa)



8.4 MILLION+
Sq. Ft. Under Development



12,000+
Homes Delivered



6700+
Homes In Progress



Site Address

Yogi Milan,
Ring Road, Silvassa - 396230

Booking Contact

+91 99252 27279 | +91 99790 85222 | +91 99252 34341

inquiry@pramukh.co.in | www.pramukh.co.in

/pramukhgroup

Developer

Shiv Builders
Yogi Milan, Ring Road, Silvassa - 396230

Structural Consultants

Takshashila Architects- Vapi
Ar. Parul Kansara (B.Arch) Er. Janak Bhavsr (M.E. Structure)

LOCATION MAP

