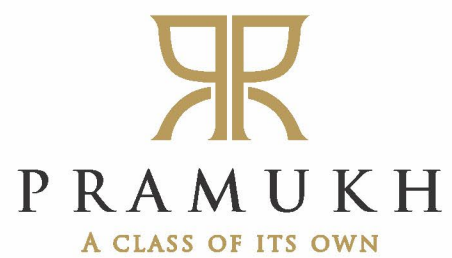




PROJECT BY :





LUXURIOUS LIVING WITH ULTRA LUXURIOUS SPACE...

Reside in these abodes of marvel with class, sophistication, n
happiness imbued in every nook n corner of the spaces,
elevating your lifestyle to extra ordinary levels

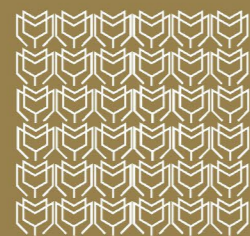


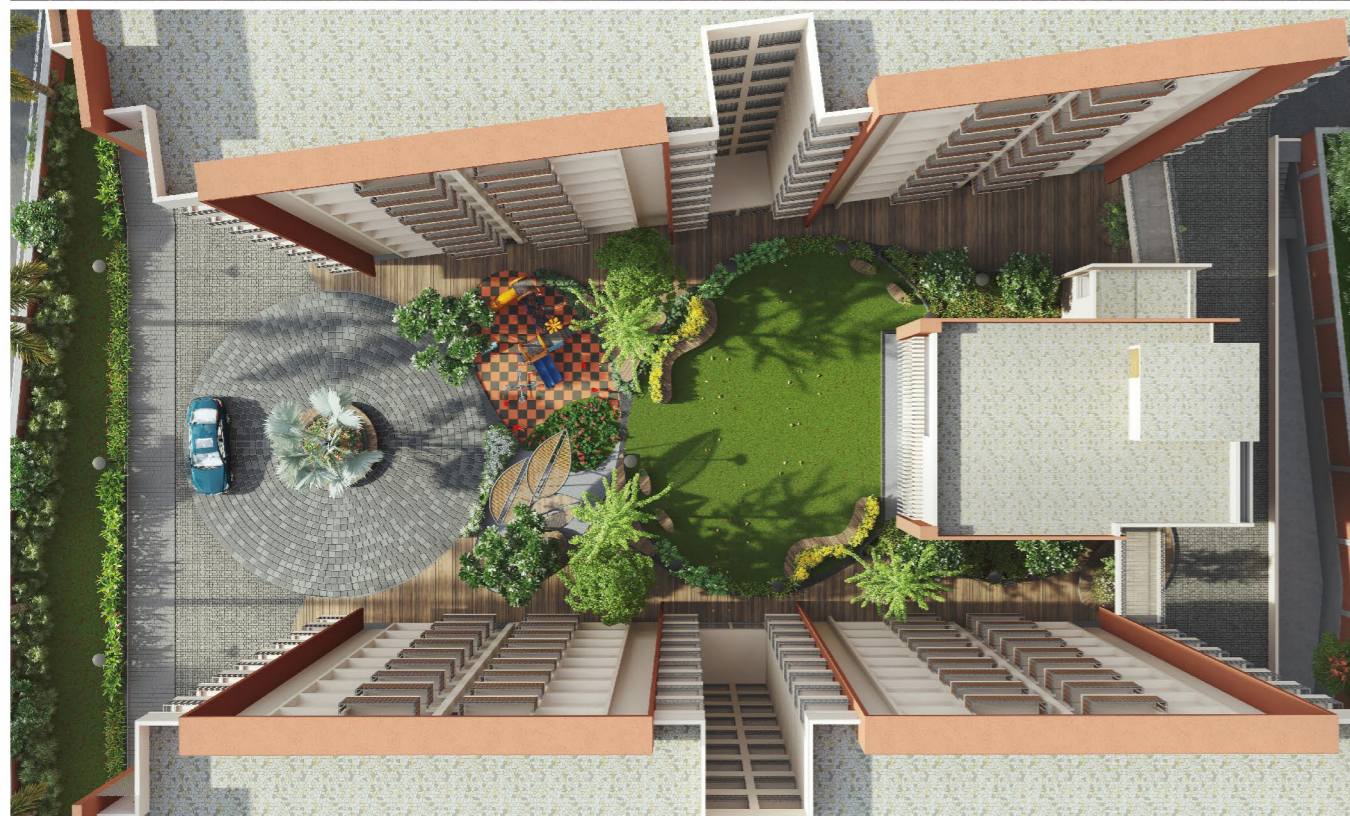
A PERFECT ODE TO TRANQUILITY IN LIFE !



EXCLUSIVE FASCINATING
HORIZON

Lead back the best times of your life with a new
natural vision in an exceptional lifestyle





Class and luxury rule in the ambience of these homes at Pramukh Meadows, as the residents will love to aim high in every aspect.





DESIGNED FOR NATURAL
LIVING

The perfect start to your adventure, because it's
simply the best with new view





- LEGENDS**
- 01} Main Entrance Gate
 - 02} Security Cabin
 - 03} Basement Ramp In
 - 04} Parking
 - 05} Senior Citizen Sitting
 - 06} Club House
 - 07} Lawn Area
 - 08} Pathway
 - 09} Children Play Area
 - 10} Round About Sit-out
 - 11} Sitting Area
 - 12} Basement Ramp Exit


GROUND
FLOOR PLAN
 1



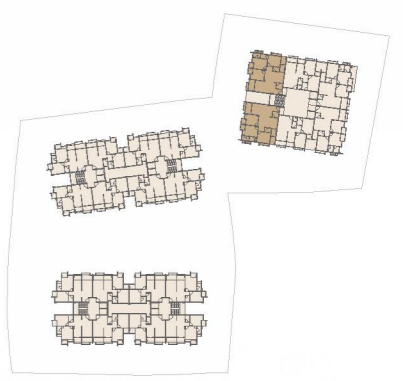

FIRST
FLOOR PLAN
 1



TYPICAL
2ND TO 9TH
FLOOR PLAN

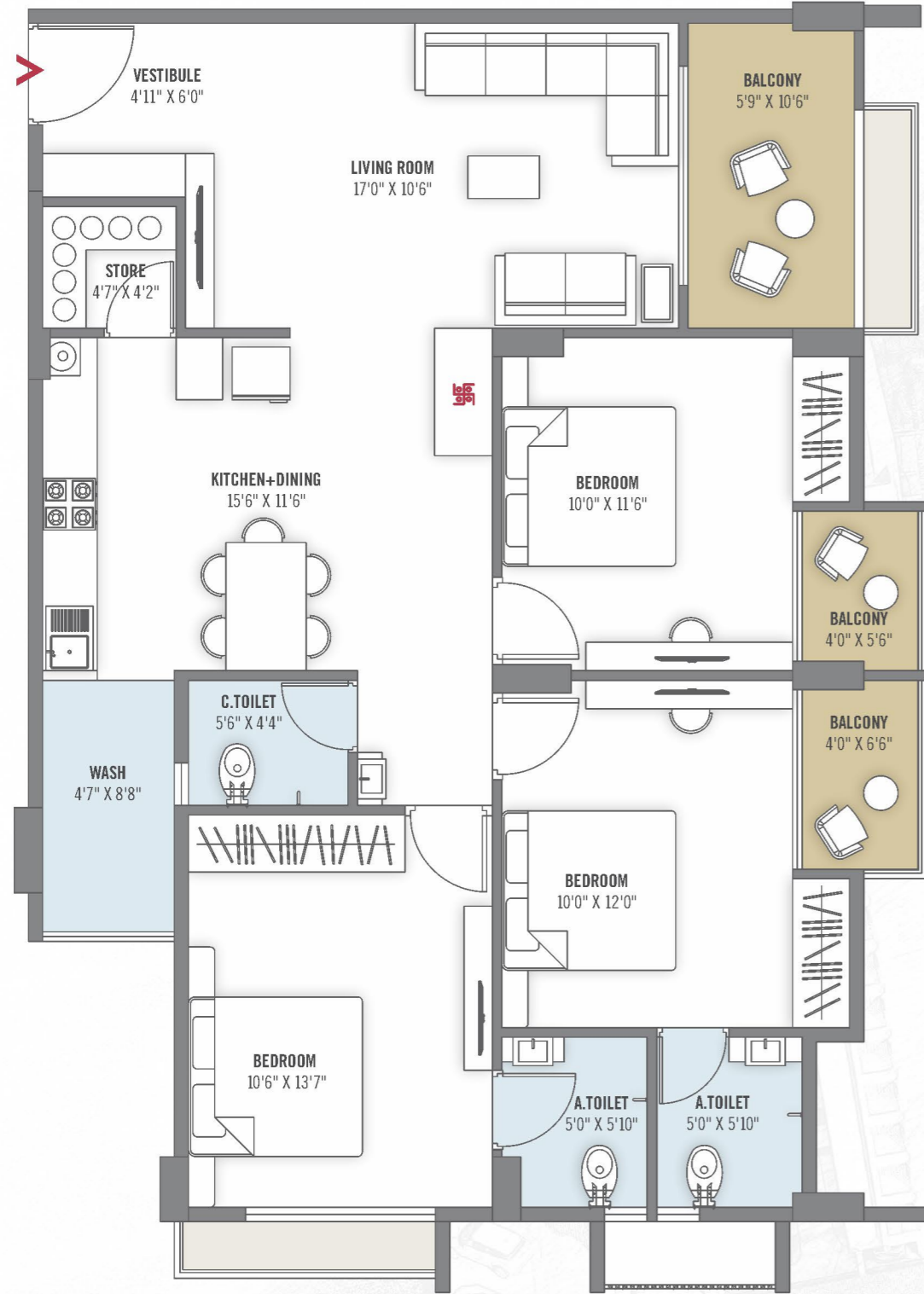
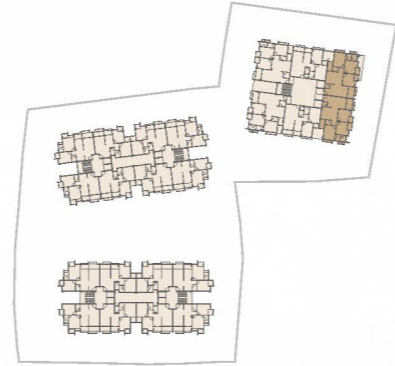
3 BHK
UNIT PLAN
|
TYPE-1

BLOCK - A



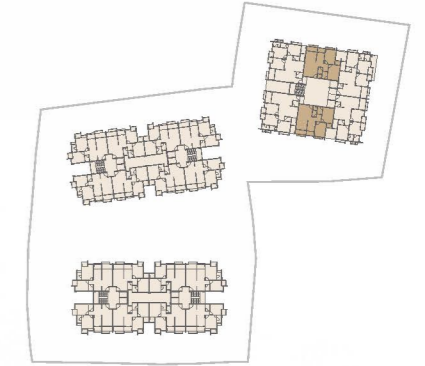

3 BHK
 UNIT PLAN
 |
 TYPE-2

BLOCK - A



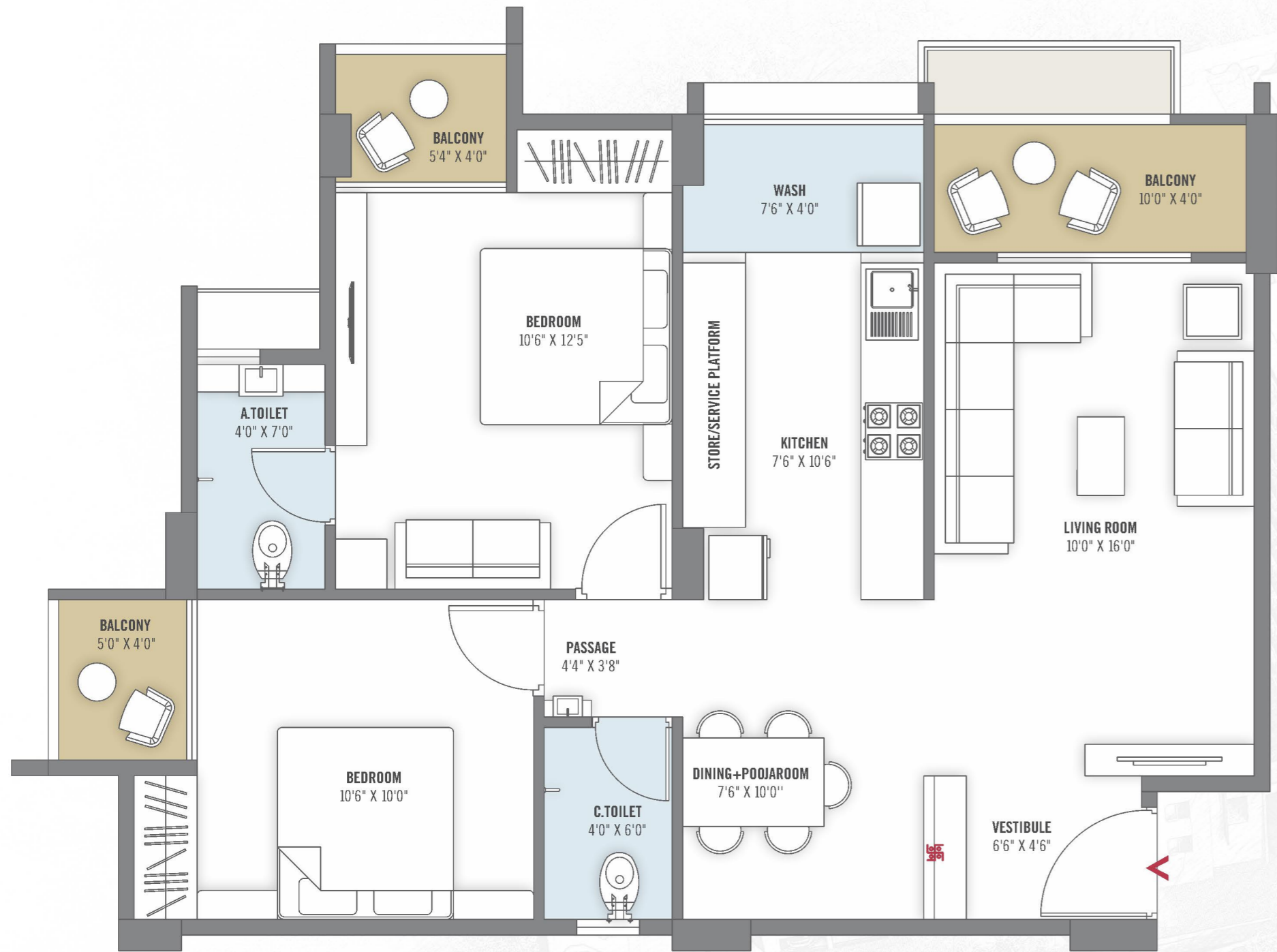
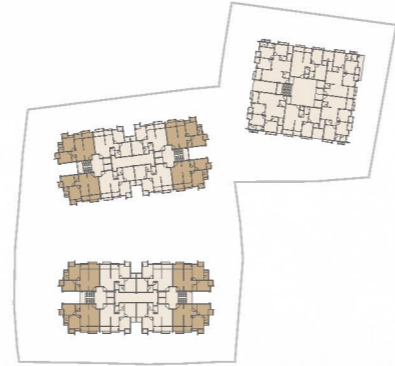

2 BHK
 UNIT PLAN
 |
 TYPE-1

BLOCK - A



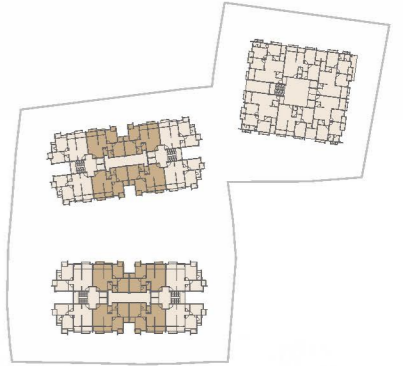

2 BHK
UNIT PLAN
|
TYPE-2

BLOCK - B & C




2 BHK
UNIT PLAN
|
TYPE-3

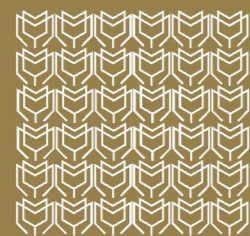
BLOCK - B & C





A STEP TOWARDS
LUXURY

Pramukh Meadows has a basket full of advantages like beautiful look, green living, secure and safe premises.





EXPERIENCE LUXURY WITH SOMETHING MORE...



Entrance Gate



CCTV Camera



24 x 7 Security



Pick Up Zone



Senior Citizen Sit Out



A/C Gymnasium



Basement Parking



Children Play Area



Power Back-Up Generator



Garden



Fire Safety



Club House

So many amenities, so much to do, so much great and happy time at Pramukh Meadows.



— Pramukh Meadows is a scintillating 2 & 3bhk residential property that's designed with great enabled design which helps resident live with ease —



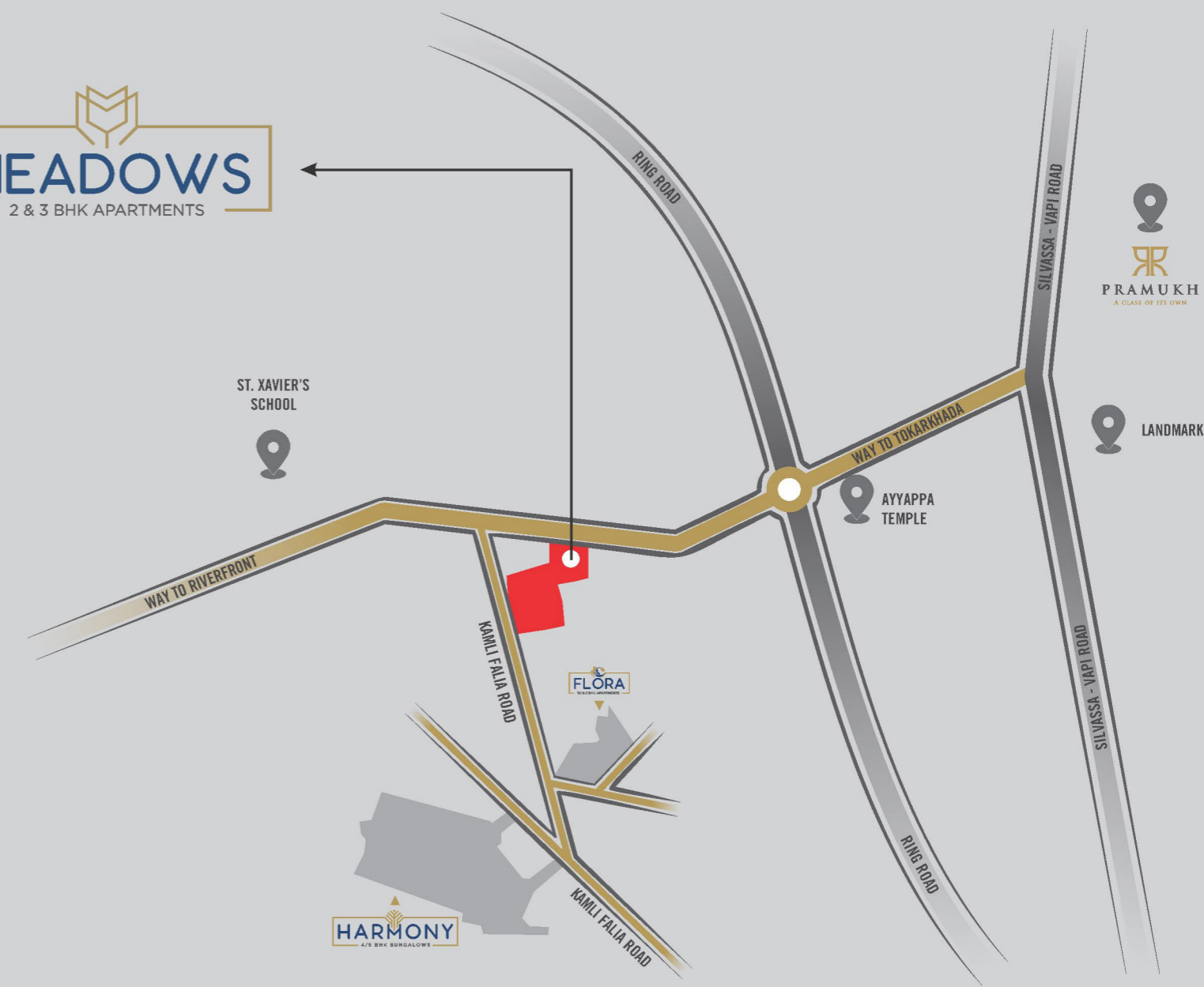


SPECIFICATION

FLOORING :	48" x 24" Vitrified tiles in hall and dining area, 24" x 24" Vitrified tiles in all other areas.
WALLS :	Internal walls and ceiling - Mala plaster with wall Gypsum, external walls - Double coat sand Face plaster with Apex paint
KITCHEN :	Kitchen platform with granite top and stainless steel sink. Designer ceramic tiles dado on kitchen counter up to 7ft. Height.
DOORS & WINDOW :	Main entrance door - Solid core flush door with both side Molded designer door skin. Other flush doors with both Side laminates. Anodized aluminum sliding windows with Quality bearings and fittings and stone sills and jambs. All door frame covered by granite & marble sil
TOILET :	Designer tiles on floor and walls up to lintel level . Branded C.P. Faucets Branded range of ceramic vessels.
PLUMBING :	C.P.V.C water supply pipes and tough/durable finolex PVC Drainage pipes for soil, Waste and drainage systems.
WATER SUPPLY :	Centralized water supply system.
ELECTRICAL WORK :	Branded moduler switches. Concealed copper wiring with Adequate number of points in all rooms bed room will have AC point & cable point in hall. MCB distribution panel for Extra safety. Automatic Elevators for escalating comforts.
ROOF :	Brick - Bat concrete for heat reflection and thermal insulation.

DISCLAIMER :

Any amendments in rules & regulations by any authority will be bound to all members, all expenses of legal document, electric meter connection, extra stamp duty (if applicable), GST, society maintenance will be borne by member • External changes shall not be allowed • Internal changes will be permitted with permission and extra cost. Before possession, execution of sale deed is compulsory • members are bound to pay installments regularly and irregularity in payment may cause cancellation of booking • Developer reserves the right of any changes in the scheme & it shall be bound to all member • Developers holds the terrace rights • This brochure is only for private circulation for general information to the member & shall not form a part of any agreement • Dimensions shown in the unit plan are subject to variation and may vary upto 3% of the total RERA carpet area of the unit • The views shown in the brochure are artist's impression only and not a legal offering and not will be part of the agreement.



SITE ADDRESS :
MEADOWS, St. Xavier's School Road,
Nr. Ayyappa Temple, Silvassa.

DEVELOPER
Pramukh Realty

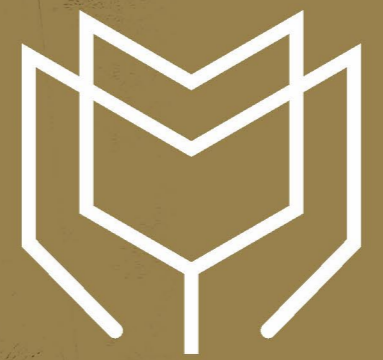
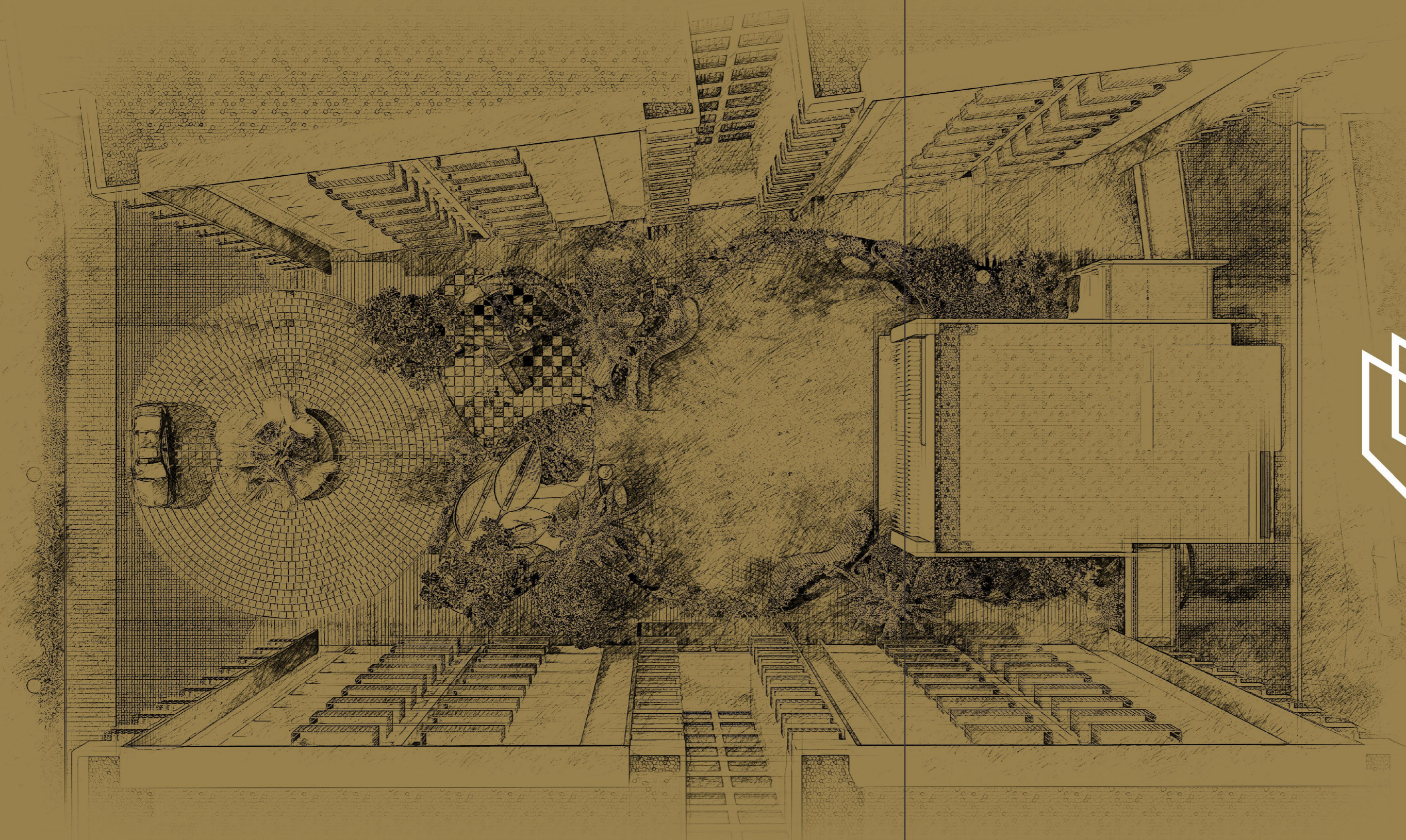
PROJECT BY :
 PRAMUKH
A CLASS OF ITS OWN

ARCHITECT :
KALATEET
DESIGNS

CONTACT : +91 99252 47188



P49600000118
maharera.mahaonline.gov.in



LUXURY, LOCATION, AND CONVENIENCE

PROJECT BY :



PRAMUKH

A CLASS OF ITS OWN