

A Project By



PRAMUKH

A CLASS OF ITS OWN



SANGATH

2 BHK SPACIOUS APARTMENTS

A Project By



PRAMUKH

A CLASS OF ITS OWN

Freedom Is
Calling
You Home

Sangath is designed
to provide free and spacious
living for those whose
aspirations touch the clouds.





Designed To
Define Elegance



Enter With Opulence

Make a statement with a grand
entrance of Sangath that will
leave you in awe of its space.



Landscaped garden with a comfortable sitting area, for you to relax and feel one with the world.

Make Nature
Your Second Home



Garden Sitting Area



Garden Sitting Area

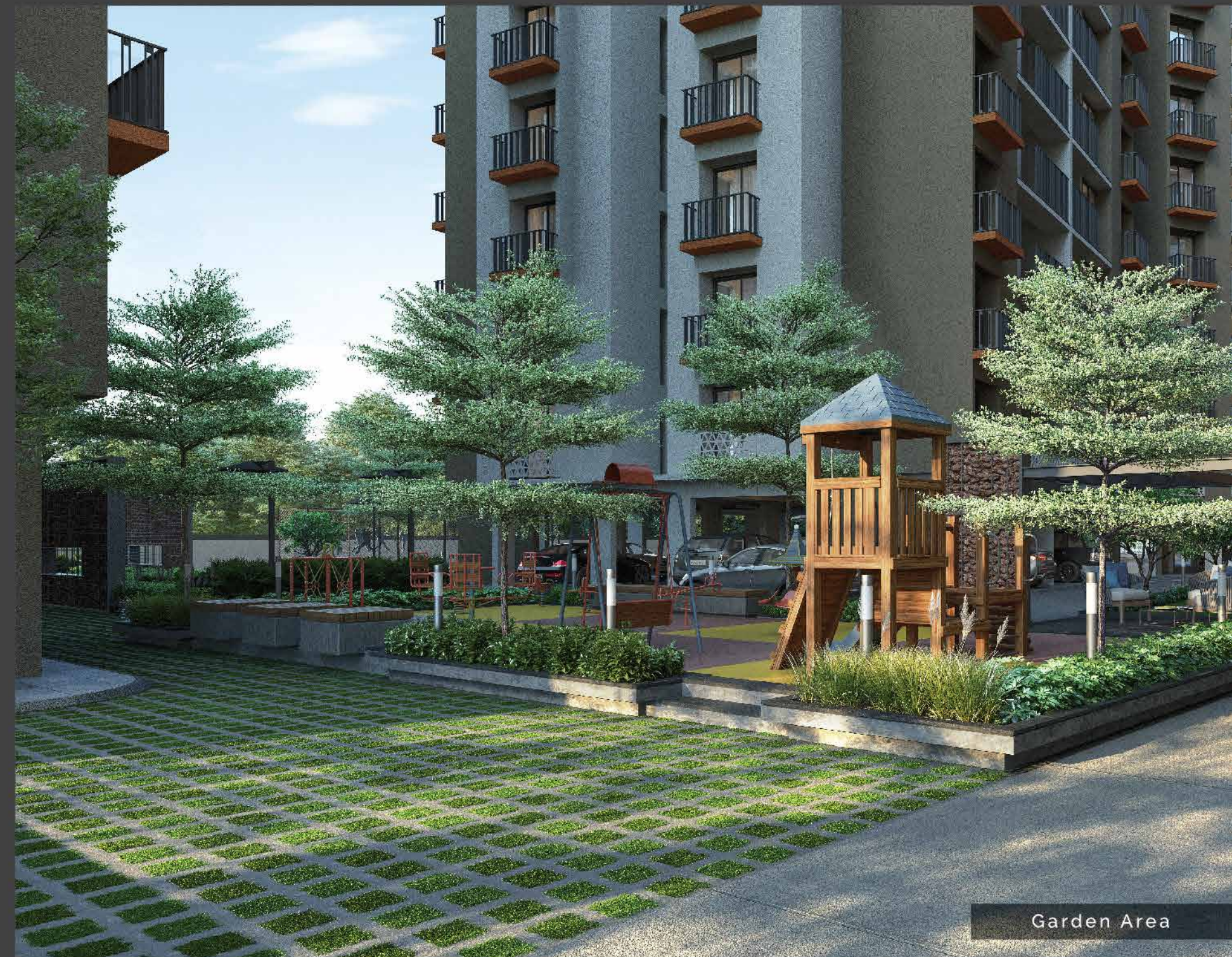
Let Childhood Grow



A Sporty Start For Your Sundays



Children Play Area



Garden Area

GROUND FLOOR



LEGEND

- | | |
|------------------------|------------------------|
| 1. ENTRANCE GATE | 10. KITCHEN |
| 2. SECURITY CABIN | 11. STORE |
| 3. DROP OFF ZONE | 12. WASH |
| 4. SEAT OUT | 13. FEMALE TOILET |
| 5. FOYER | 14. MALE TOILET |
| 6. METER ROOM | 15. GARDEN |
| 7. EVENT LAWN | 16. CHILDREN PLAY AREA |
| 8. MULTIPURPOSE HALL | 17. COVERED PARKING |
| 9. RECEPTION & WAITING | 18. OPEN PARKING |

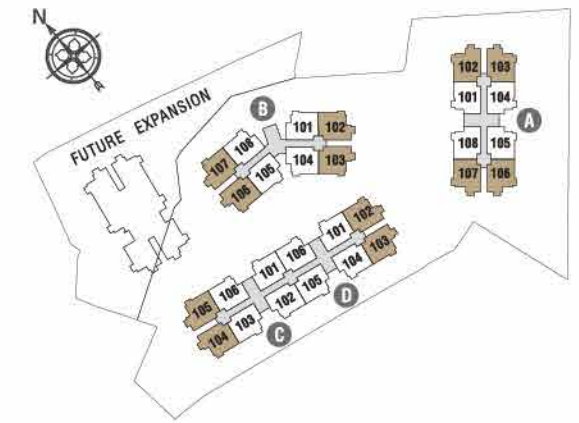
TYPICAL FLOOR PLAN





2 BHK UNIT | TYPE - 1A

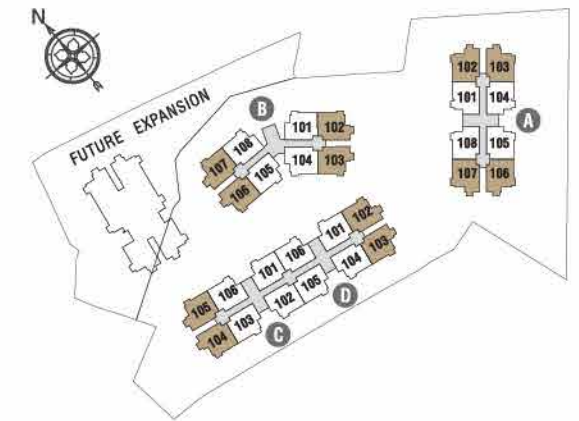
FIRST FLOOR





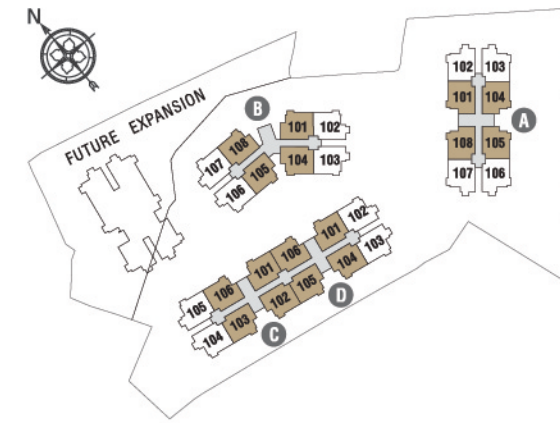
2 BHK UNIT | TYPE - 1 B

2 BHK UNIT (2ND TO 9TH)



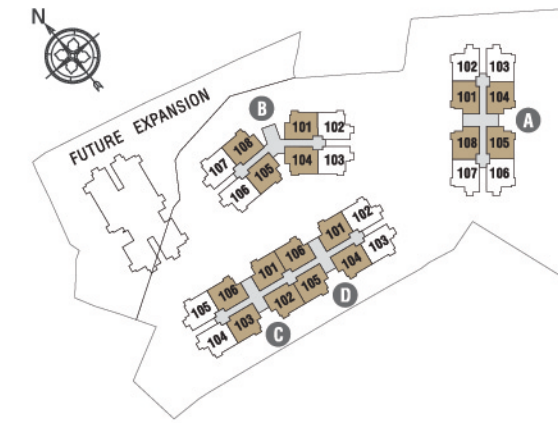
2 BHK UNIT | TYPE - 2A

FIRST FLOOR



2 BHK UNIT | TYPE - 2B

2 BHK UNIT (2ND TO 9TH)





SANGATH



AMENITIES

- CCTV surveillance
- Entrance gate with adequate security
- Landscaped garden
- Paved internal road with adequate pole lights
- Gymnasium with standard quality equipments
- Club house
- Power back-up for common amenities
- Standard quality two auto door lifts
- Separate water supply lines for domestic and flushing water

SPECIFICATIONS

FLOORING	: 48"x24" vitrified tiles in hall and dining area, 24"x24" vitrified tiles in all other areas.
WALLS	: Internal walls and ceiling – mala plaster with wall Gypsum, External walls – double coat sand – face plaster with Apex paint.
KITCHEN	: Kitchen platform with granite top and stainless steel sink. Designer ceramic tiles dado on kitchen counter up to 7ft height.
DOORS & WINDOWS	: Main entrance door – solid core flush door with both side molded designer door skin. Other flush doors with both side laminate. Anodized aluminum sliding windows with quality bearings and fittings and stone sills and jambs. All door frame covered by granite & marble sil.
TOILET	: Designer tiles on floor and walls up to lintel level. Branded C.P. Faucets. Branded range of ceramic vessels.
PLUMBING	: C.P.V.C. water supply pipes and tough/durable Finolex PVC drainage pipes for soil, waste and drainage systems.
WATER SUPPLY	: Centralized water supply system.
ELECTRICAL WORK	: Branded modular switches. Concealed copper wiring with adequate number of points in all rooms. bed room will have AC point & cable point in hall. MCB distribution panel for Extra Safety. Automatic Elevators for escalating comforts.
ROOF	: Brick – bat concrete for heat reflection and thermal insulation.



SOUTH GUJARAT'S LEADING REAL ESTATE DEVELOPER

Derived from the word 'Prime', Pramukh was established in the year **1993**, and is on the path of delivering iconic and class apart projects since then. Pramukh group has been providing aesthetically appealing and comfortable properties in Surat, Vapi, Silvassa and Umbergaon.

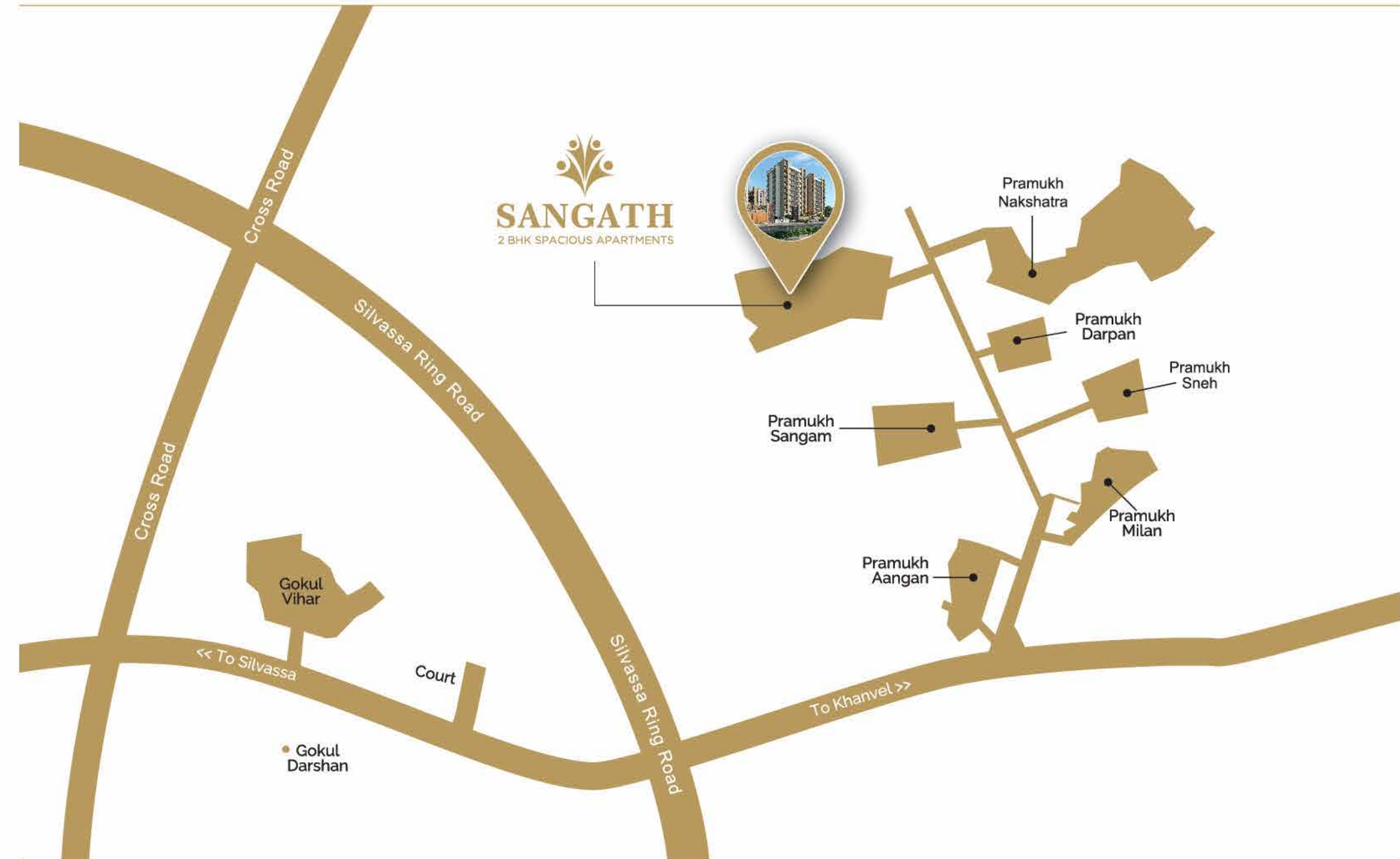
Over the last **25 years**, we have enjoyed the patronage of over **12,000+** families, with more than **12 million Sq. Ft.** constructed floor space. Currently, **6700+** homes i.e. **8 million Sq. Ft** area is under development.

Pramukh has a prominent contribution towards building the real estate infrastructure in most of Silvassa and especially in **Samarvani** area that we started developing in 2010. Since then, **Samarvani** alone has witnessed the development of **7 projects** by Pramukh namely - Pramukh Aangan, Pramukh Milan, Pramukh Sangam, Pramukh Darpan, Pramukh Sneh, Nakshatra and Sangath. They collectively house approx. **2000+ families** who are now a part of ours.

Welcome to Sangath, Silvassa
Welcome To 'A Class Of Its Own'

www.pramukh.co.in | inquiry@pramukh.co.in
[f](#)/pramukhgroup

LOCATION MAP



Site Address:
Sangath, Krishna
Company Road,
Samarvani, Silvassa
Booking Contact
81417 60000
99252 47673



Maha Rera Reg.
NO.: P49600000083

Developer
Pramukh Realty

Architect
PDC Architects,
Ahmedabad,

Structural Consultants
Takshashila Architects,
Vapi

MEP Consultants
Jhaveri Associates,
Ahmedabad